



Solar Racking Component





Contents

Rail

| | |
|----------------|----|
| R56 Rail | 01 |
| R69 Rail | 02 |
| R69 Black Rail | 03 |

Rail Joiner

| | |
|--|----|
| #51 150mm Earthing Rail Joiner | 04 |
| #51-1 150mm Earthing Rail Joiner | 05 |
| #56 150mm Earthing Rail Joiner | 06 |
| #51 150mm Earthing Rail Joiner (Black) | 07 |
| #56 150mm Earthing Rail Joiner (Black) | 08 |

Tile Roof Hook

| | |
|--------------------|----|
| Tile Hook | 09 |
| Tile Hook Vertical | 10 |

Tile Hook Height Extender

| | |
|---------------------------|----|
| Tile Hook Height Extender | 11 |
|---------------------------|----|

Adjustable Tile Hook

| | |
|----------------------|----|
| Adjustable Tile Hook | 12 |
|----------------------|----|

Tilt

| | |
|---------------------------|----|
| Tilt Rear Arm 10/15 | 13 |
| Tilt Rear Arm 15/30 | 14 |
| Black Tilt Rear Arm 15/30 | 15 |
| Tilt Front Arm | 16 |
| Black Tilt Front Arm | 17 |

Tin Feet

| | |
|--------------|----|
| L Feet | 18 |
| #02 L Feet | 19 |
| Black L Feet | 20 |

Tin Feet Extender

| | |
|-------------------|----|
| Tin Feet Extender | 21 |
|-------------------|----|

Mid Clamp

| | |
|----------------|----|
| 30mm Mid Clamp | 22 |
| 35mm Mid Clamp | 23 |
| 40mm Mid Clamp | 24 |

Adjustable Mid Clamp

| | |
|-------------------|----|
| 30/35mm Mid Clamp | 25 |
| 30/35mm Mid Clamp | 26 |

| | |
|---|----|
| 35/40mm Mid Clamp | 27 |
| Black 30/35mm Mid Clamp | 28 |
| Black 30/35mm Mid Clamp with earthing plate | 29 |
| 35/40mm Mid Clamp with earthing clip | 30 |
| 35-50mm Adjustable Mid Clamp | 31 |

Adjustable End Clamp

| | |
|-------------------------------|----|
| Goomax Trapezoidal Roof Clamp | 32 |
| 28/30mm End Clamp | 33 |
| 30/32mm End Clamp | 34 |
| 30/35mm End Clamp | 35 |
| Black 30/35mm End Clamp | 36 |
| 30/40mm End Clamp | 37 |
| 35/40mm End Clamp | 38 |
| 35-50mm Adjustable End Clamp | 39 |

Thin Film Mid Clamp

| | |
|---------------------|----|
| Thin Film Mid Clamp | 40 |
|---------------------|----|

Thin Film End Clamp

| | |
|---------------------|----|
| Thin Film End Clamp | 41 |
|---------------------|----|

End Clamp

| | |
|----------------|----|
| 30mm End Clamp | 42 |
| 35mm End Clamp | 43 |
| 40mm End Clamp | 44 |

Cable Clip

| | |
|---------------------------|----|
| Goomax 2-Cable Cable Clip | 45 |
|---------------------------|----|

Earthing Clip

| | |
|----------------------------|----|
| Goomax Earthing Washer | 46 |
| #12 Goomax Earthing Washer | 47 |
| #04 Goomax Earthing Washer | 48 |

Grounding Lug

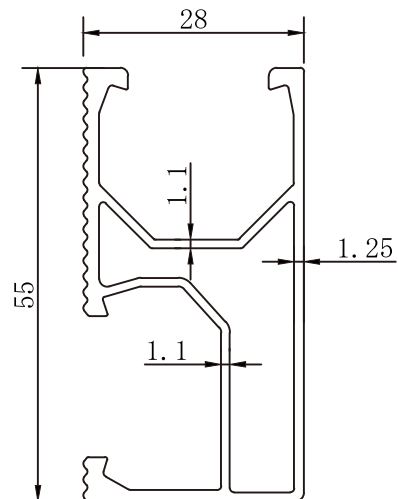
| | |
|----------------------|----|
| Goomax Grounding Lug | 49 |
| Black Grounding Lug | 50 |

Trapezoidal Roof Clamp

| | |
|---|----|
| Goomax Kliplok 406 Interface | 51 |
| Goomax Kliplok 700 Interface | 52 |
| Goomax Kliplok 700 Interface with L feet | 53 |
| Goomax Kliplok 305 Interface | 54 |
| Goomax Universal Kliplok 406&700 Interface -Small | 55 |
| Goomax Universal Kliplok 406&700 Interface -Big | 56 |

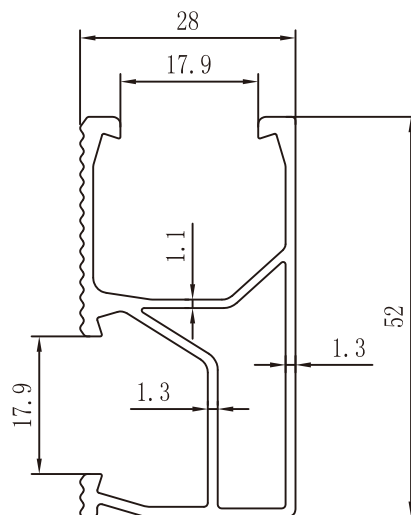
Rail

| | |
|-----------------------|--------------------------|
| Product Name | Rail |
| Product Code | GM-R56 |
| Dimensions | W 28xH 55mm |
| Weight | 0.73kg/m |
| Material | AL6005-T5 |
| Surface Finish | Anodized (10 micron) |
| Packaging | 4pcs/pack, 432pcs/pallet |
| Standard | AS/NZS 1170.2 |



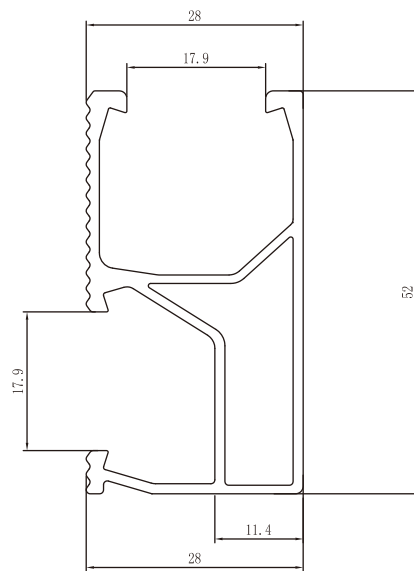
Rail

| | |
|-----------------------|--------------------------|
| Product Name | Rail |
| Product Code | GM-R69 |
| Dimensions | W 28xH 52mm |
| Weight | 0.68kg/m |
| Material | AL6005-T5 |
| Surface Finish | Anodized (10 micron) |
| Packaging | 4pcs/pack, 648pcs/pallet |
| Standard | AS/NZS 1170.2 |



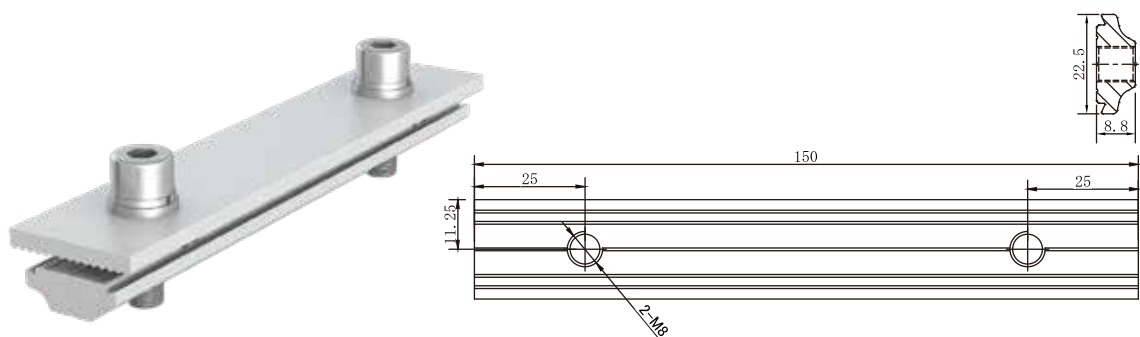
Rail

| | |
|-----------------------|----------------------------|
| Product Name | Rail |
| Product Code | GM-R69-B |
| Dimensions | W 28xH 52mm |
| Weight | 0.68kg/m |
| Material | AL6005-T5 |
| Surface Finish | Black Anodized (10 micron) |
| Packaging | 4pcs/pack, 648pcs/pallet |
| Standard | AS/NZS 1170.2 |



Rail Joiner

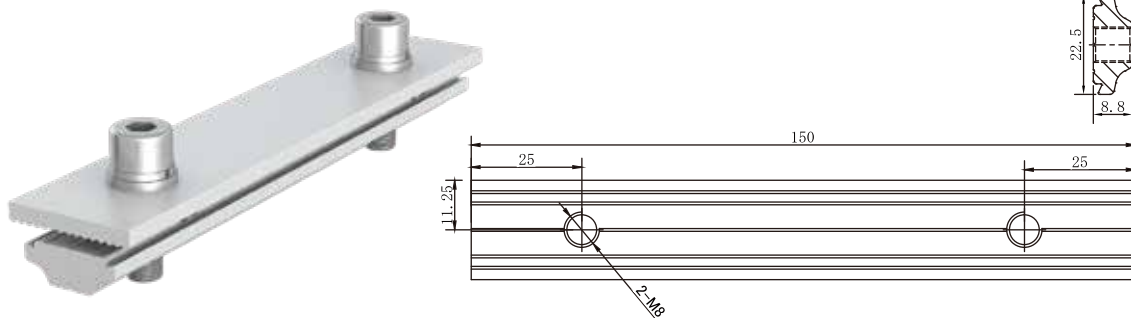
| | |
|-----------------------|--|
| Product Name | 150mm Earthing Rail Joiner |
| Product Code | GM-RS-51-AZ |
| Application | Connect Goomax rails for longer PV array and pierce rails' surfaces for earthing |
| Dimensions | L 150xW 30xH 8.8mm |
| Weight | 0.134kg |
| Material | AL6005-T5 |
| Surface Finish | Black electrophoresis |
| Packaging | 160pcs/carton, 500x300x210mm |
| Standard | AS/NZS 1170.2 |



| Component List (Qty./Set) | | | |
|---------------------------|---|--------------------------|---|
| Joiner | 1 | T Nut | 1 |
| SUS304 Washer Set | 2 | Hexagon Bolt Set (M8*25) | 2 |
| SUS304 Star Washer | 2 | | |

Rail Joiner

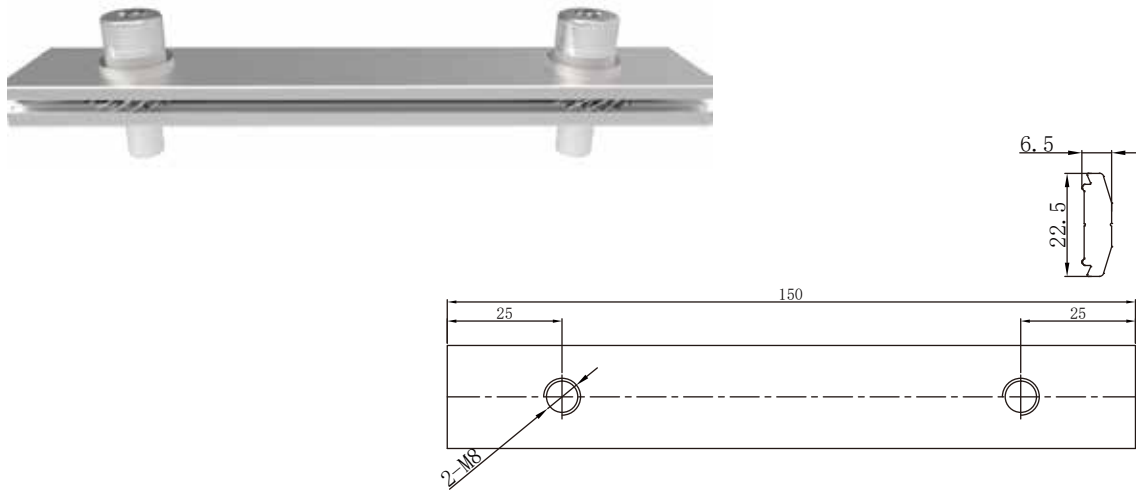
| | |
|-----------------------|--|
| Product Name | 150mm Earthing Rail Joiner |
| Product Code | GM-RS-51-AZ-1 |
| Application | Connect Goomax rails for longer PV array and pierce rails' surfaces for earthing |
| Dimensions | L 150xW 28xH 8.8mm |
| Weight | 0.12kg |
| Material | AL6005-T5 |
| Surface Finish | Anodized (10 micron) |
| Packaging | 160pcs/carton, 500x300x210mm |
| Standard | AS/NZS 1170.2 |



| Component List (Qty./Set) | | | |
|---------------------------|---|--------------------------|---|
| Joiner | 1 | T Nut | 1 |
| SUS304 Washer Set | 2 | Hexagon Bolt Set (M8*25) | 2 |
| SUS304 Star Washer | 2 | | |

Rail Joiner

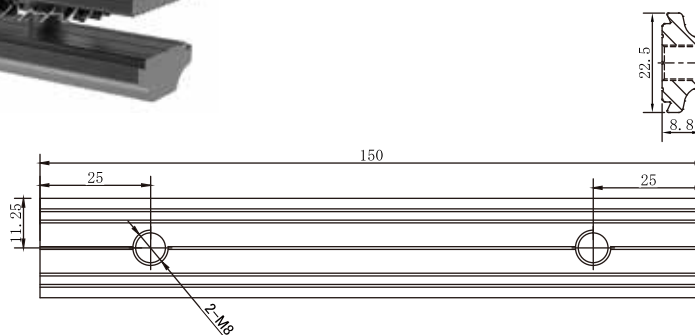
| | |
|-----------------------|--|
| Product Name | 150mm Earthing Rail Joiner |
| Product Code | GM-RS-56-AZ |
| Application | Connect Goomax rails for longer PV array and pierce rails' surfaces for earthing |
| Dimensions | L 150xW 28xH 6.5mm |
| Weight | 0.112kg |
| Material | AL6005-T5 |
| Surface Finish | Anodized (10 micron) |
| Packaging | 160pcs/carton, 500x300x210mm |
| Standard | AS/NZS 1170.2 |



| Component List (Qty./Set) | | | |
|---------------------------|---|--------------------------|---|
| Joiner | 1 | T Nut | 1 |
| SUS304 Washer Set | 2 | Hexagon Bolt Set (M8*25) | 2 |
| SUS304 Star Washer | 2 | | |

Rail Joiner

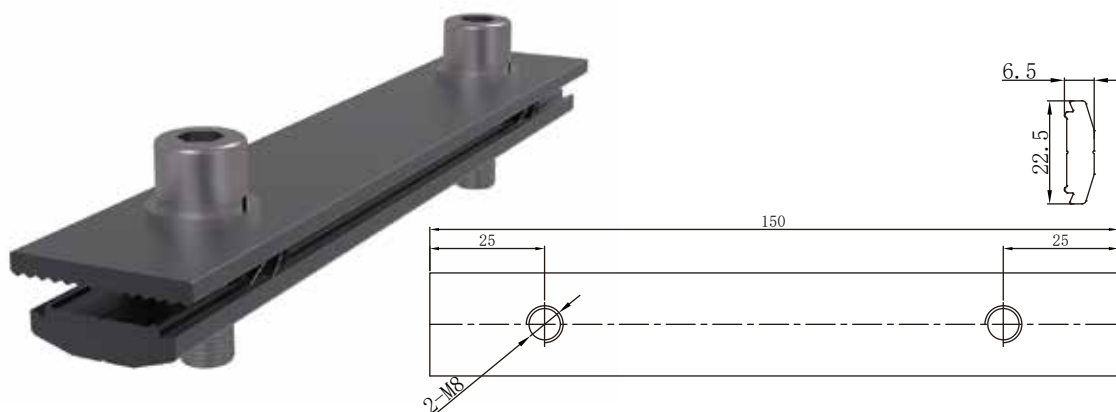
| | |
|-----------------------|--|
| Product Name | Black 150mm Earthing Rail Joiner |
| Product Code | GM-RS-51-AZ-B |
| Application | Connect Goomax rails for longer PV array and pierce rails' surfaces for earthing |
| Dimensions | L 150xW 30xH 8.8mm |
| Weight | 0.134kg |
| Material | AL6005-T5 |
| Surface Finish | Black electrophoresis |
| Packaging | 160pcs/carton, 500x300x210mm |
| Standard | AS/NZS 1170.2 |



| Component List (Qty./Set) | | | |
|---------------------------|---|--------------------------|---|
| Joiner | 1 | T Nut | 1 |
| SUS304 Washer Set | 2 | Hexagon Bolt Set (M8*25) | 2 |
| SUS304 Star Washer | 2 | | |

Rail Joiner

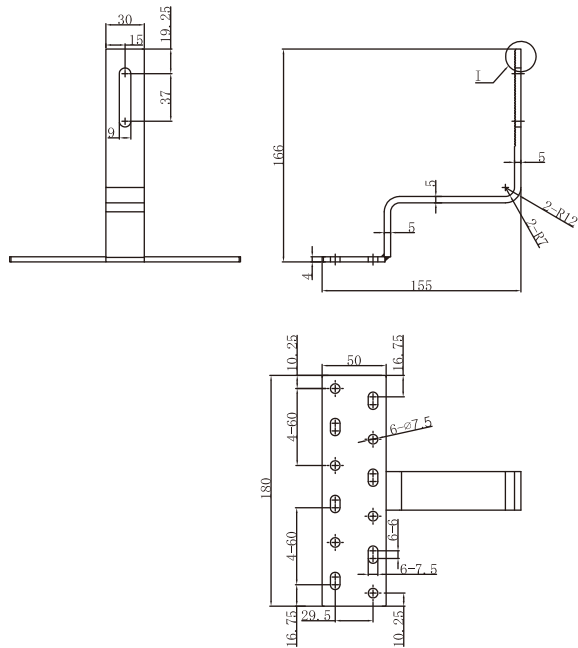
| | |
|-----------------------|--|
| Product Name | 150mm Earthing Rail Joiner (Black) |
| Product Code | GM-RS-56-AZ-B |
| Application | Connect Goomax rails for longer PV array and pierce rails' surfaces for earthing |
| Dimensions | L 150xW 28xH 6.5mm |
| Weight | 0.112kg |
| Material | AL6005-T5 |
| Surface Finish | Black electrophoresis |
| Packaging | 160pcs/carton, 500x300x210mm |
| Standard | AS/NZS 1170.2 |



| Component List (Qty./Set) | | | |
|---------------------------|---|--------------------------|---|
| Joiner | 1 | T Nut | 1 |
| SUS304 Washer Set | 2 | Hexagon Bolt Set (M8*25) | 2 |
| SUS304 Star Washer | 2 | | |

Tile Roof Hook

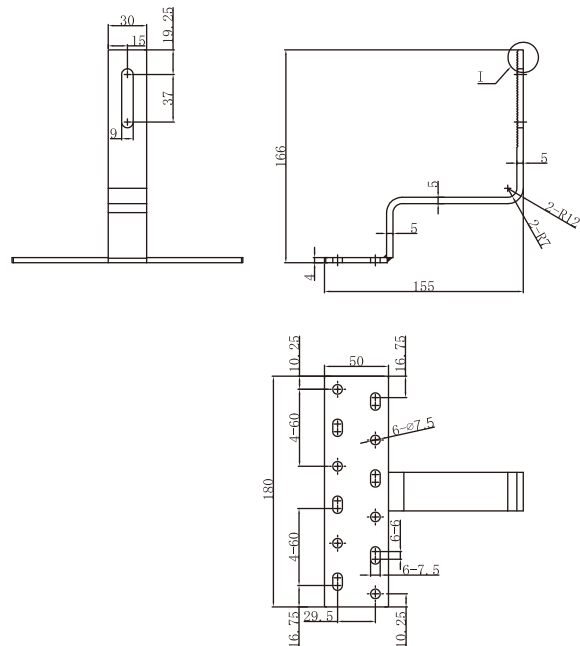
| | |
|-----------------------|---|
| Product Name | Tile Hook |
| Product Code | GM-CTH-01-AZ-02 |
| Application | Tile Roof with Timber Purlin |
| Dimensions | L 155xW 180xH 166mm |
| Weight | 0.566kg/set |
| Material | Stainless Steel (SUS304), Screw: SUS410 |
| Surface Finish | Sandblast, class3 for screws |
| Packaging | 24pcs/carton, 500x300x210mm |
| Standard | AS/NZS 1170.2 |



| Component List (Qty./Set) | | | |
|-----------------------------|---|--------------------------|---|
| Tile Hook #1 | 1 | T Nut | 1 |
| SUS410 Wood Screw (M6.3*65) | 3 | Hexagon Bolt Set (M8*25) | 1 |
| SUS304 M8 Washer Set | 1 | | |

Tile Roof Hook

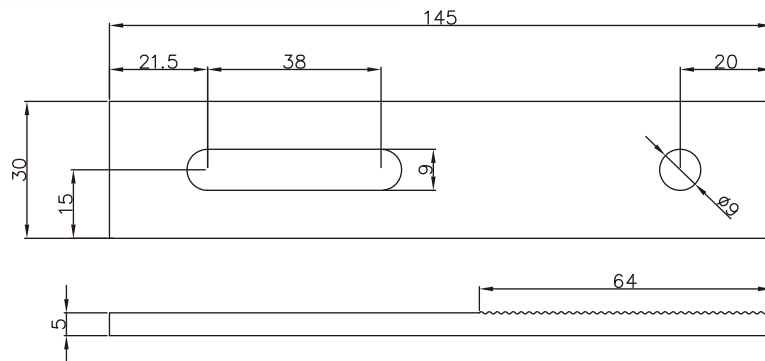
| | |
|-----------------------|---|
| Product Name | Tile Hook Vertical |
| Product Code | GM-CTH-03-AZ |
| Application | Tile roof with timber purlin |
| Dimensions | L 155xW 180xH 166mm |
| Weight | 0.566kg/set |
| Material | Stainless Steel (SUS304), Screw: SUS410 |
| Surface Finish | Sandblast, class3 for screws |
| Packaging | 24pcs/carton, 500x300x210mm |
| Standard | AS/NZS 1170.2 |



| Component List (Qty./Set) | | | |
|-----------------------------|---|--------------------------|---|
| Tile Hook #3 | 1 | T Nut | 1 |
| SUS410 Wood Screw (M6.3*65) | 3 | Hexagon Bolt Set (M8*25) | 1 |
| SUS304 M8 Washer Set | 1 | | |

Tile Hook Height Extender

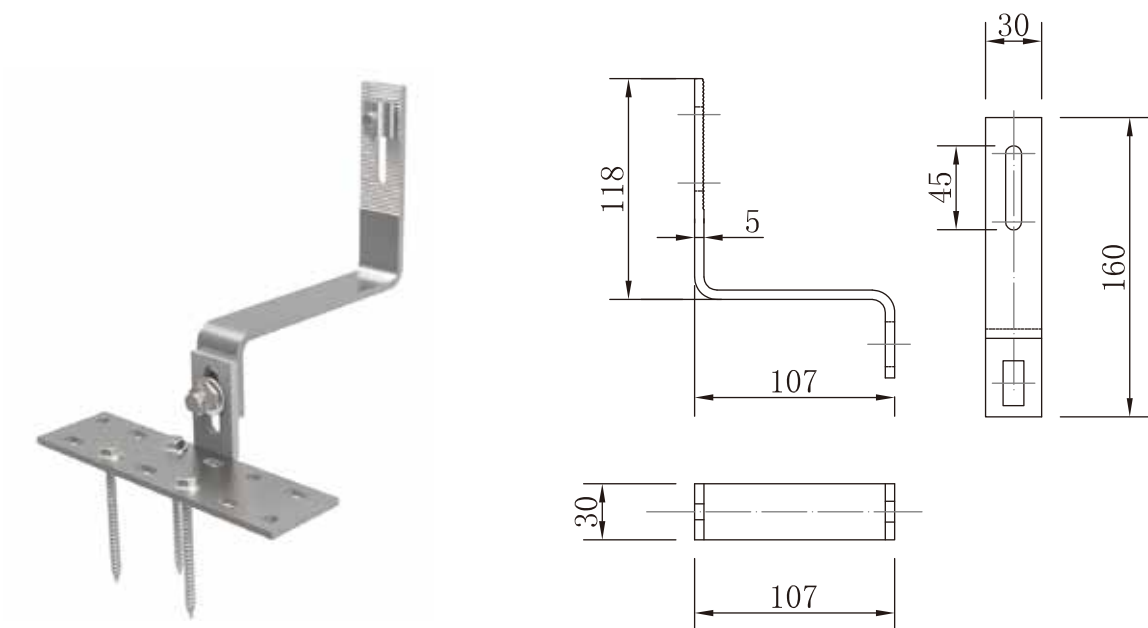
| | |
|-----------------------|--|
| Product Name | Tile Hook Height Extender |
| Product Code | GM-CTH-11-AZ |
| Application | Extend the height of standard tile hooks |
| Dimensions | L145*W30 |
| Weight | 0.082kg |
| Material | Stainless Steel (SUS304) |
| Surface Finish | Sandblast |
| Packaging | 300pcs/carton, 500x300x210mm |
| Standard | AS/NZS 1170.2 |



| Component List (Qty./Set) | | | |
|---------------------------|---|--------------------------|---|
| Tile Hook Height Extender | 1 | Hexagon Bolt Set (M8*25) | 1 |
| SUS304 M8 Washer Set | 1 | | |

Adjustable *Tile Hook*

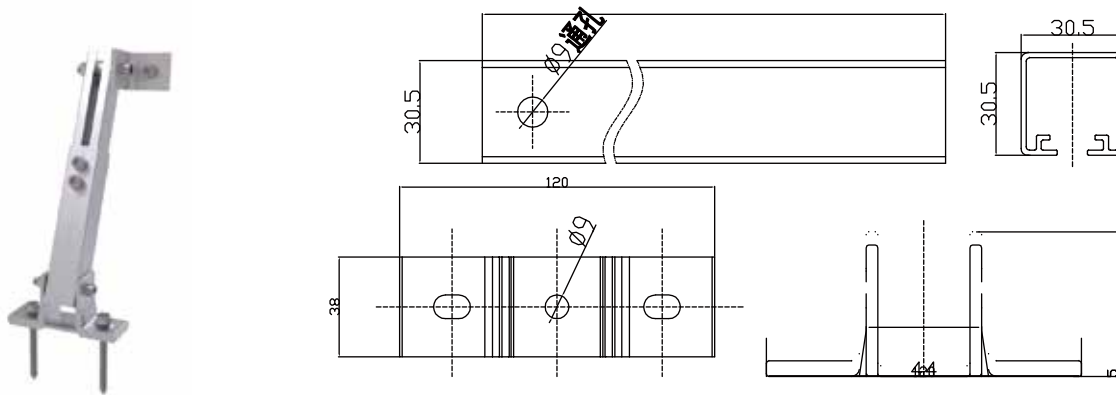
| | |
|-----------------------|---|
| Product Name | Adjustable Tile Hook |
| Product Code | GM-CTH-10-AZ |
| Application | Tile Roof with Timber Purlin |
| Dimensions | L180*W157*H160 |
| Weight | 0.85KG |
| Material | Stainless Steel (SUS304), Screw: SUS410 |
| Surface Finish | Sandblast, class3 for screws |
| Packaging | 24pcs/carton, 500x300x210mm |
| Standard | AS/NZS 1170.2 |



| Component List (Qty./Set) | | | |
|-----------------------------|---|---------------------------|---|
| Adjustable Tile Hook | 1 | T Nut | 1 |
| SUS410 Wood Screw (M6.3*65) | 3 | Hexagon Bolt Set (M8*20) | 1 |
| SUS304 M8 Washer Set | 1 | Hexagon Bolt Set (M10*25) | 1 |

Tilt

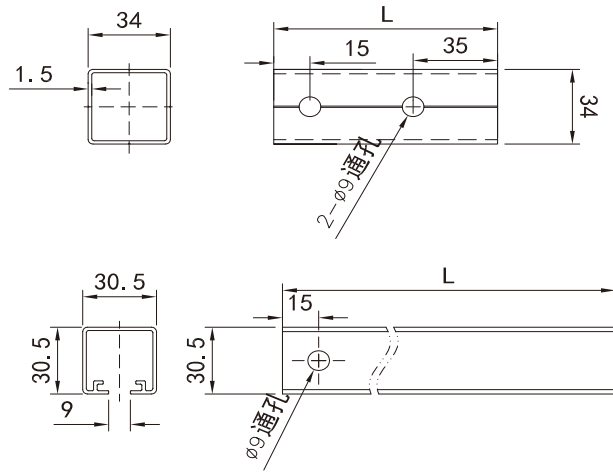
| | |
|-----------------------|---|
| Product Name | Tilt Rear Arm 10/15 |
| Product Code | GM-AS-200-AZ |
| Application | Metal Roof, Flat Roof |
| Dimensions | L 120xH 200mm |
| Weight | 576g/set |
| Material | AL6005-T5, Screw: SUS410 |
| Surface Finish | Anodized (10 micron), class3 for screws |
| Packaging | 20pcs/carton, 500x300x210mm |
| Standard | AS/NZS 1170.2 |



| Component List (Qty./Set) | | | |
|---------------------------|---|-----------------------------|---|
| Internal Tube | 1 | Hexagon Bolt Set (M8*60) | 1 |
| External Tube | 1 | Hexagon Bolt Set (M8*25) | 1 |
| L Feet | 1 | Hexagon Bolt Set (M8*50) | 1 |
| L connector | 1 | T Nut | 1 |
| Rubber Washer | 2 | Aluminum Ring | 1 |
| SUS304 M8 Washer Set | 5 | SUS410 Wood Screw (M6.3*80) | 3 |
| Hexagon Bolt Set (M8*20) | 2 | | |

Tilt

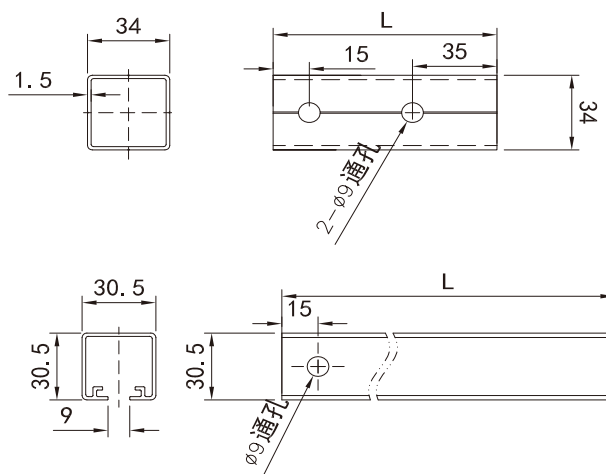
| | |
|-----------------------|---|
| Product Name | Tilt Rear Arm 15/30 |
| Product Code | GM-AS-400-AZ |
| Application | Metal Roof, Flat Roof |
| Dimensions | L 120xH 400mm |
| Weight | 669g/set |
| Material | AL6005-T5, Screw: SUS410 |
| Surface Finish | Anodized (10 micron), class3 for screws |
| Packaging | 15pcs/carton, 500x300x210mm |
| Standard | AS/NZS 1170.2 |



| Component List (Qty./Set) | | | |
|---------------------------|---|-----------------------------|---|
| Internal Tube | 1 | Hexagon Bolt Set (M8*60) | 1 |
| External Tube | 1 | Hexagon Bolt Set (M8*25) | 1 |
| L Feet | 1 | Hexagon Bolt Set (M8*50) | 1 |
| L connector | 1 | T Nut | 1 |
| Rubber Washer | 2 | Aluminum Ring | 1 |
| SUS304 M8 Washer Set | 5 | SUS410 Wood Screw (M6.3*80) | 2 |
| Hexagon Bolt Set (M8*20) | 2 | | |

Tilt

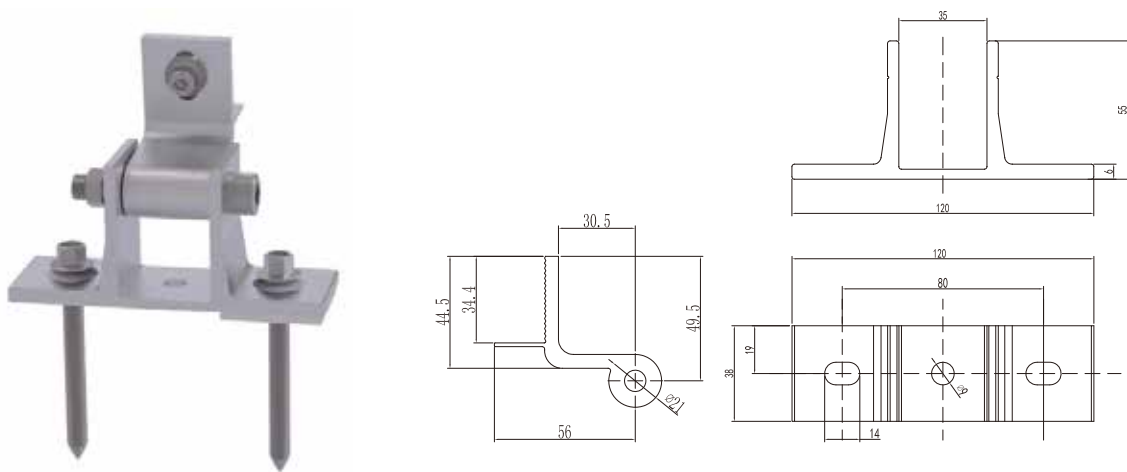
| | |
|-----------------------|--|
| Product Name | Black Tilt Rear Arm 15/30 |
| Product Code | GM-AS-400-AZ-B |
| Application | Metal Roof, Flat Roof |
| Dimensions | L 120xH 400mm |
| Weight | 669g/set |
| Material | AL6005-T5, Screw: SUS410 |
| Surface Finish | Black electrophoresis, class3 for screws |
| Packaging | 15pcs/carton, 500x300x210mm |
| Standard | AS/NZS 1170.2 |



| Component List (Qty./Set) | | | |
|---------------------------|---|-----------------------------|---|
| Internal Tube | 1 | Hexagon Bolt Set (M8*60) | 1 |
| External Tube | 1 | Hexagon Bolt Set (M8*25) | 1 |
| L Feet | 1 | Hexagon Bolt Set (M8*50) | 1 |
| L connector | 1 | T Nut | 1 |
| Rubber Washer | 2 | Aluminum Ring | 1 |
| SUS304 M8 Washer Set | 5 | SUS410 Wood Screw (M6.3*80) | 3 |
| Hexagon Bolt Set (M8*20) | 2 | | |

Tilt

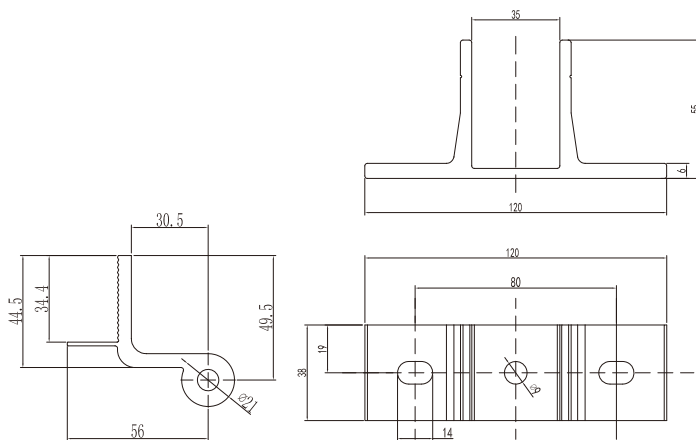
| | |
|-----------------------|---|
| Product Name | Tilt Front Arm |
| Product Code | GM-AS-B01-AZ |
| Application | Metal Roof, Flat Roof |
| Dimensions | L 120xH 55mm |
| Weight | 265g/set |
| Material | AL6005-T5, Screw: SUS410 |
| Surface Finish | Anodized (10 micron), class3 for screws |
| Packaging | 60pcs/carton, 500x300x210mm |
| Standard | AS/NZS 1170.2 |



| Component List (Qty./Set) | | | |
|---------------------------|---|-----------------------------|---|
| Tilt Front Arm | 1 | Hexagon Bolt Set (M8*60) | 1 |
| L Feet | 1 | Hexagon Bolt Set (M8*25) | 1 |
| Rubber Washer | 2 | T Nut | 1 |
| SUS304 M8 Washer Set | 2 | SUS410 Wood Screw (M6.3*80) | 3 |

Tilt

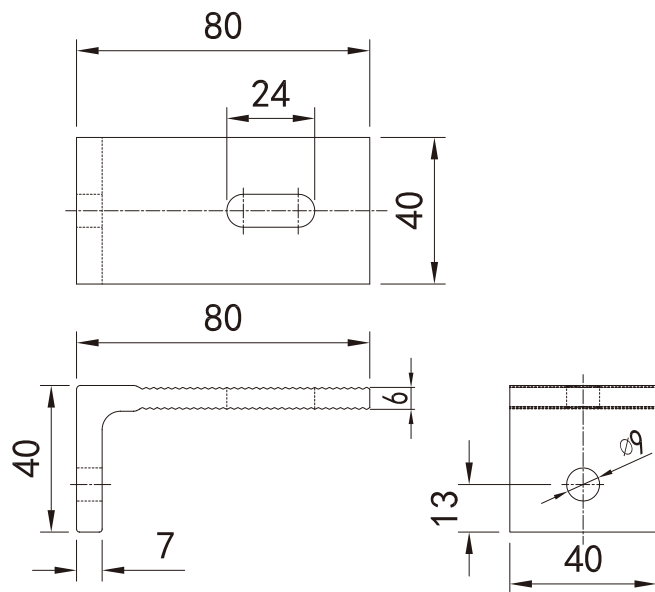
| | |
|-----------------------|--|
| Product Name | Black Tilt Front Arm |
| Product Code | GM-AS-B01-AZ-B |
| Application | Metal Roof, Flat Roof |
| Dimensions | L 120xH 55mm |
| Weight | 265g/set |
| Material | AL6005-T5, Screw: SUS410 |
| Surface Finish | Black electrophoresis, class3 for screws |
| Packaging | 60pcs/carton, 500x300x210mm |
| Standard | AS/NZS 1170.2 |



| Component List (Qty./Set) | | | |
|---------------------------|---|-----------------------------|---|
| Tilt Front Arm | 1 | Hexagon Bolt Set (M8*60) | 1 |
| L Feet | 1 | Hexagon Bolt Set (M8*25) | 1 |
| Rubber Washer | 2 | T Nut | 1 |
| SUS304 M8 Washer Set | 2 | SUS410 Wood Screw (M6.3*80) | 3 |

Tin Feet

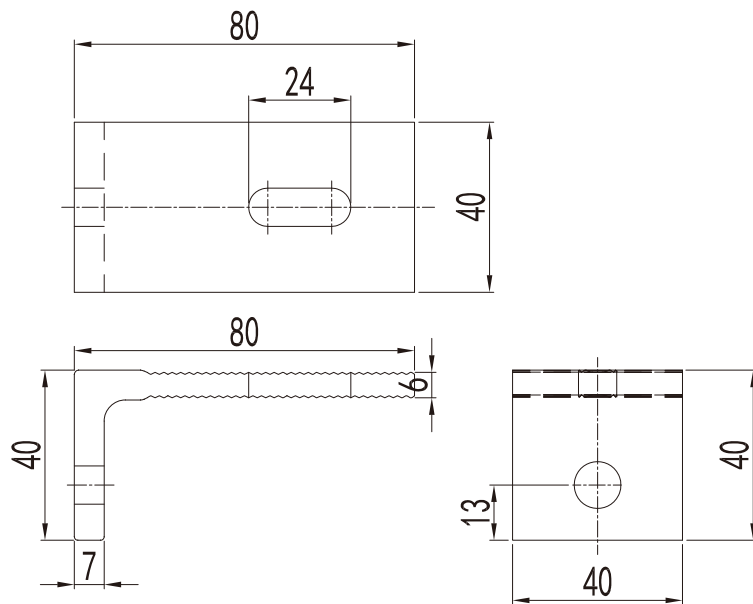
| | |
|-----------------------|--|
| Product Name | L Feet |
| Product Code | GM-MRH-L5-AZ |
| Application | Metal Roof, Flat Roof |
| Dimensions | L 40xH 80mm |
| Weight | 0.114kg |
| Material | AL6005-T5 Screw: SUS410, Rubber washer: EPDM |
| Surface Finish | Anodized (10 micron), class3 for screws |
| Packaging | 160pcs/carton, 500x300x210mm |
| Standard | AS/NZS 1170.2 |



| Component List (Qty./Set) | | | |
|---------------------------|---|---------------------------|---|
| L Feet | 1 | SUS410 Wood Screw M6.3*80 | 1 |
| Rubber Washer | 1 | T Nut | 1 |
| SUS304 Washer Set | 2 | Hexagon Bolt Set (M8*25) | 1 |

Tin Feet

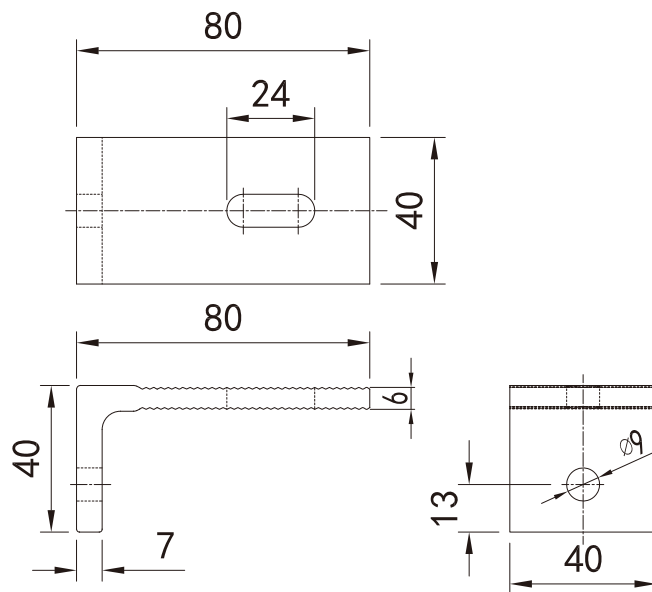
| | |
|-----------------------|--|
| Product Name | L Feet |
| Product Code | GM-MRH-L5-AZ-02 |
| Application | Metal Roof, Flat Roof |
| Dimensions | L 40xH 80mm |
| Weight | 0.11kg |
| Material | AL6005-T5 Screw: SUS410, Rubber washer: EPDM |
| Surface Finish | Anodized (10 micron), class3 for screws |
| Packaging | 160pcs/carton, 500x300x210mm |
| Standard | AS/NZS 1170.2 |



| Component List (Qty./Set) | | | |
|---------------------------|---|---------------------------|---|
| L Feet | 1 | SUS410 Wood Screw M6.3*65 | 1 |
| Rubber Washer | 1 | T Nut | 1 |
| SUS304 Washer Set | 2 | Hexagon Bolt Set (M8*25) | 1 |

Tin Feet

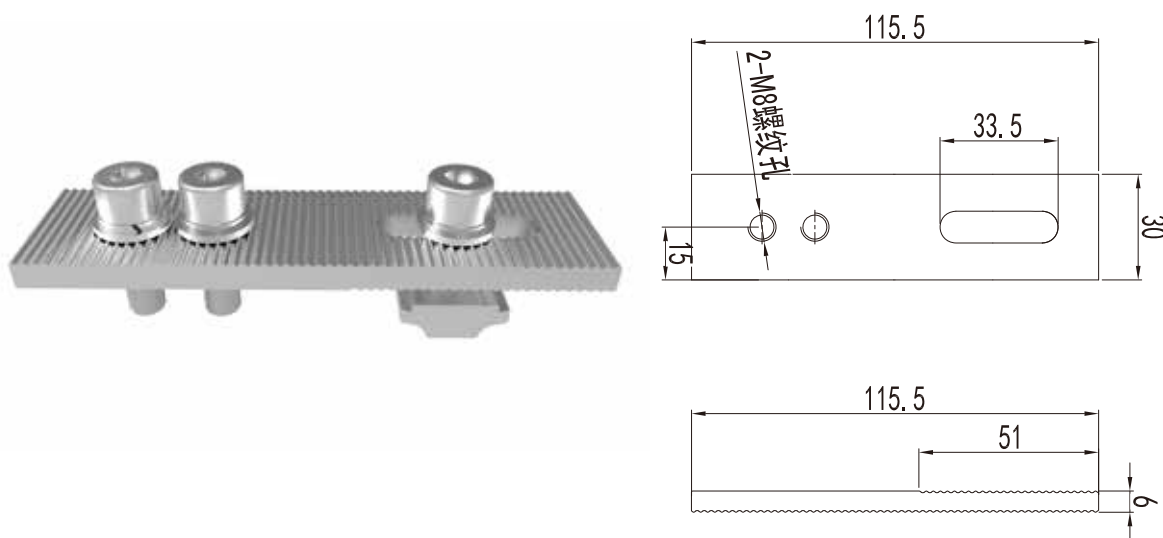
| | |
|-----------------------|--|
| Product Name | Black L Feet |
| Product Code | GM-MRH-L5-AZ-B |
| Application | Metal Roof, Flat Roof |
| Dimensions | L 40xH 80mm |
| Weight | 0.114kg |
| Material | AL6005-T5 Screw: SUS410, Rubber washer: EPDM |
| Surface Finish | Black electrophoresis, class3 for screws |
| Packaging | 160pcs/carton, 500x300x210mm |
| Standard | AS/NZS 1170.2 |



| Component List (Qty./Set) | | | |
|---------------------------|---|---------------------------|---|
| L Feet | 1 | SUS410 Wood Screw M6.3*80 | 1 |
| Rubber Washer | 1 | T Nut | 1 |
| SUS304 Washer Set | 2 | Hexagon Bolt Set (M8*25) | 1 |

Tin Feet Extender

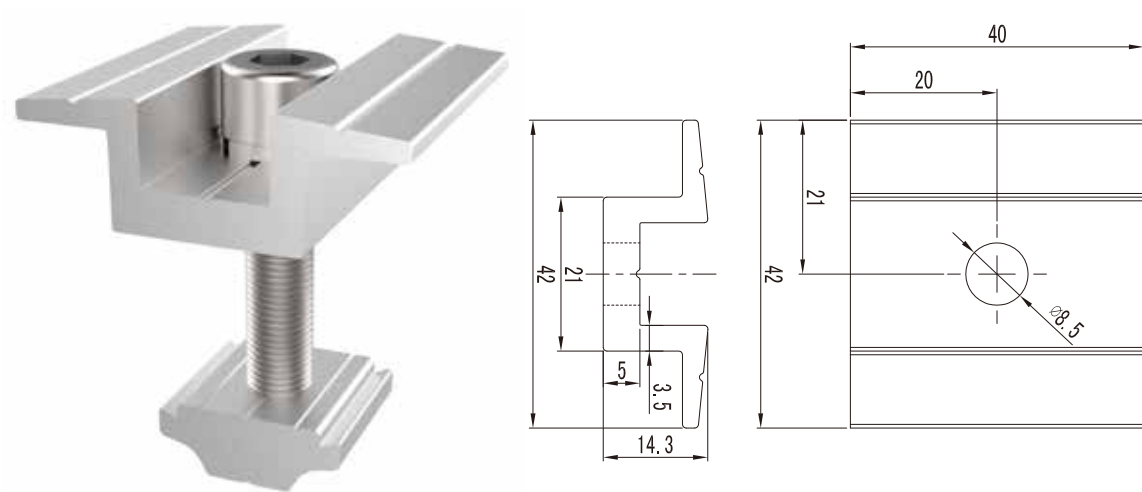
| | |
|-----------------------|--------------------------------------|
| Product Name | Tin Feet Extender |
| Product Code | GM-MRH-YCJ-AZ |
| Application | Extend the height of standard L Feet |
| Dimensions | L 115.5xW 30mm |
| Weight | 0.13KG |
| Material | AL6005-T5 Screw: SUS410 |
| Surface Finish | Anodized (10 micron) |
| Packaging | 300pcs/carton, 500x300x210mm |
| Standard | AS/NZS 1170.2 |



| Component List (Qty./Set) | | | |
|---------------------------|---|--------------------------|---|
| Tin Feet Extender | 1 | T Nut | 1 |
| SUS304 Washer Set | 2 | Hexagon Bolt Set (M8*25) | 1 |

Mid Clamp

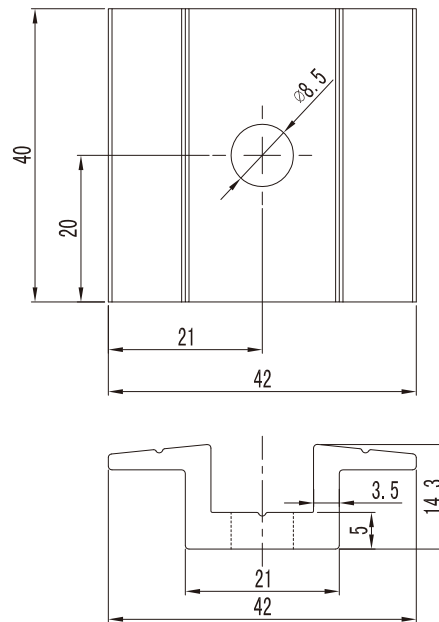
| | |
|-----------------------|---|
| Product Name | 30mm Mid Clamp |
| Product Code | GM-MC-30-AZ |
| Application | For framed PV module of 30mm thickness (with Goomax Rails) |
| Dimensions | L 42xW 40xH 14.3mm |
| Weight | 0.047kg |
| Material | AL6005-T5 |
| Surface Finish | Anodized (10 micron) |
| Packaging | 300pcs/carton, 500x300x210mm |
| Standard | AS/NZS 1170.2 |



| Component List (Qty./Set) | | | |
|---------------------------|---|---------------------|---|
| Mid clamp | 1 | T Nut | 1 |
| SUS304 Washer | 1 | Hexagon Bolt(M8*40) | 1 |

Mid Clamp

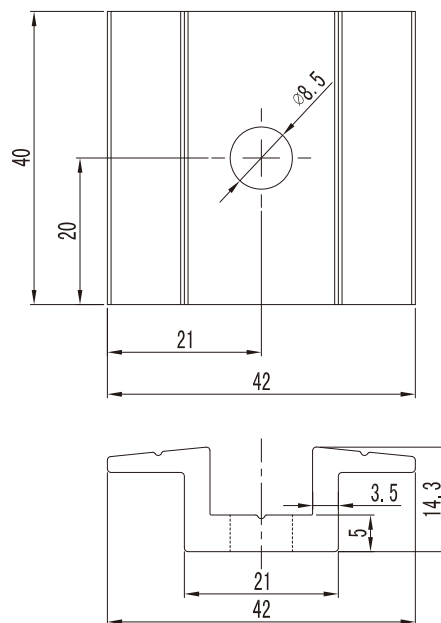
| | |
|-----------------------|---|
| Product Name | 35mm Mid Clamp |
| Product Code | GM-MC-35-AZ |
| Application | For framed PV module of 35mm thickness (with Goomax Rails) |
| Dimensions | L 42xW 40xH 14.3mm |
| Weight | 0.049kg |
| Material | AL6005-T5 |
| Surface Finish | Anodized (10 micron) |
| Packaging | 300pcs/carton, 500x300x210mm |
| Standard | AS/NZS 1170.2 |



| Component List (Qty./Set) | | | |
|---------------------------|---|---------------------|---|
| Mid clamp | 1 | T Nut | 1 |
| SUS304 Washer | 1 | Hexagon Bolt(M8*45) | 1 |

Mid Clamp

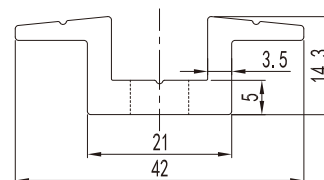
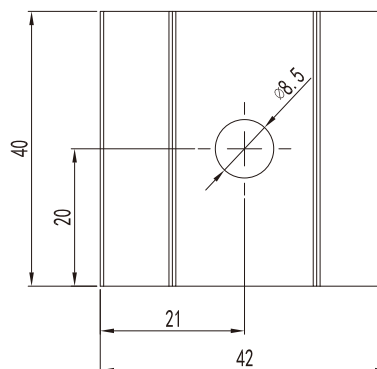
| | |
|-----------------------|---|
| Product Name | 40mm Mid Clamp |
| Product Code | GM-MC-40-AZ |
| Application | For framed PV module of 40mm thickness (with Goomax Rails) |
| Dimensions | L 42xW 40xH 14.3mm |
| Weight | 0.051kg |
| Material | AL6005-T5 |
| Surface Finish | Anodized (10 micron) |
| Packaging | 300pcs/carton, 500x300x210mm |
| Standard | AS/NZS 1170.2 |



| Component List (Qty./Set) | | | |
|---------------------------|---|---------------------|---|
| Mid clamp | 1 | T Nut | 1 |
| SUS304 Washer | 1 | Hexagon Bolt(M8*50) | 1 |

Adjustable Mid Clamp

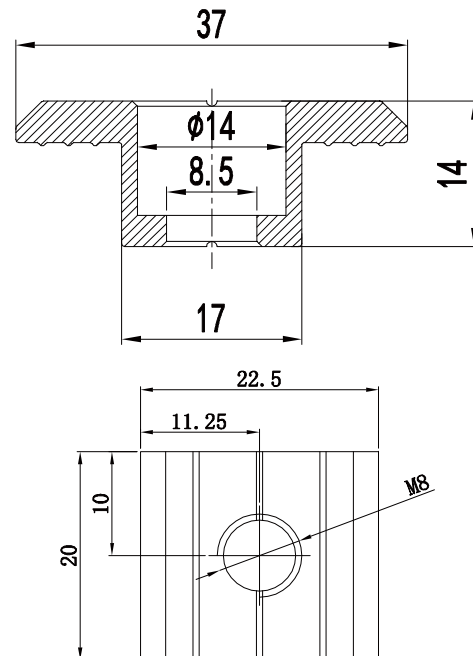
| | |
|-----------------------|--|
| Product Name | 30/35mm Mid Clamp |
| Product Code | GM-MC-30(35)-AZ |
| Application | Adjustable For framed PV module of 30-35mm thickness (with Goomax Rails) |
| Dimensions | L 42xW 40xH 14.3mm |
| Weight | 0.051kg |
| Material | AL6005-T5 |
| Surface Finish | Anodized (10 micron) |
| Packaging | 300pcs/carton, 500x300x210mm |
| Standard | AS/NZS 1170.2 |



| Component List (Qty./Set) | | | |
|---------------------------|---|---------------------|---|
| Mid clamp | 1 | T Nut | 1 |
| SUS304 Washer | 1 | Hexagon Bolt(M8*45) | 1 |

Adjustable Mid Clamp

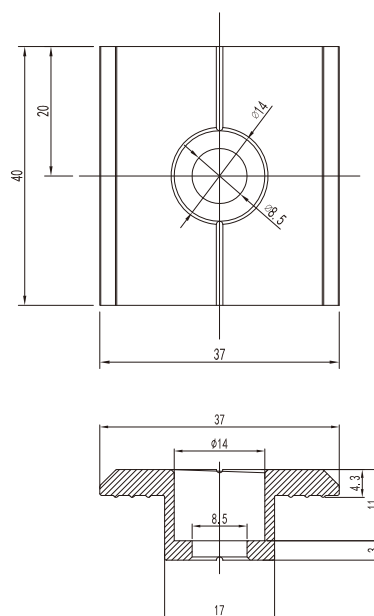
| | |
|-----------------------|--|
| Product Name | 30/35mm Mid Clamp |
| Product Code | GM-MC-30(35)-AZ-1 |
| Application | Adjustable for framed PV module of 30-35mm thickness (with Goomax Rails) |
| Dimensions | L 40xW 37xH 14mm |
| Weight | 0.052kg |
| Material | AL6005-T5 |
| Surface Finish | Anodized (10 micron) |
| Packaging | 300pcs/carton, 500x300x210mm |
| Standard | AS/NZS 1170.2 |



| Component List (Qty./Set) | | | |
|---------------------------|---|---------------------|---|
| Mid clamp | 1 | T Nut | 1 |
| SUS304 Washer | 1 | Hexagon Bolt(M8*45) | 1 |

Adjustable Mid Clamp

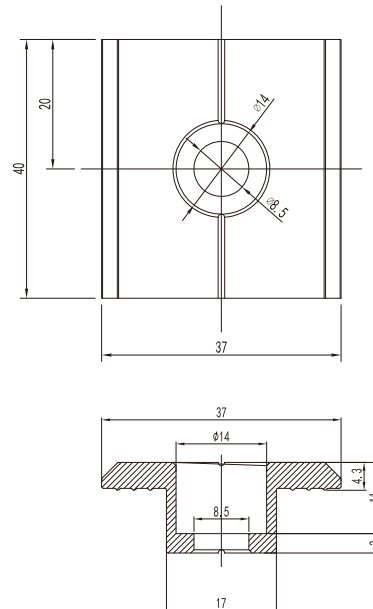
| | |
|-----------------------|--|
| Product Name | 30/35mm Mid Clamp |
| Product Code | GM-MC-30(35)-AZ-4-D |
| Application | Adjustable for framed PV module of 30-35mm thickness (with Goomax Rails) |
| Dimensions | L 40xW 37xH 14mm |
| Weight | 0.052kg |
| Material | AL6005-T5 |
| Surface Finish | Anodized (10 micron) |
| Packaging | 300pcs/carton, 500x300x210mm |
| Standard | AS/NZS 1170.2 |



| Component List (Qty./Set) | | | |
|---------------------------|---|---------------------|---|
| Mid clamp | 1 | Hexagon Bolt(M8*45) | 1 |
| SUS304 Washer | 1 | Spring | 1 |
| T Nut | 1 | Earthing clip | 1 |

Adjustable Mid Clamp

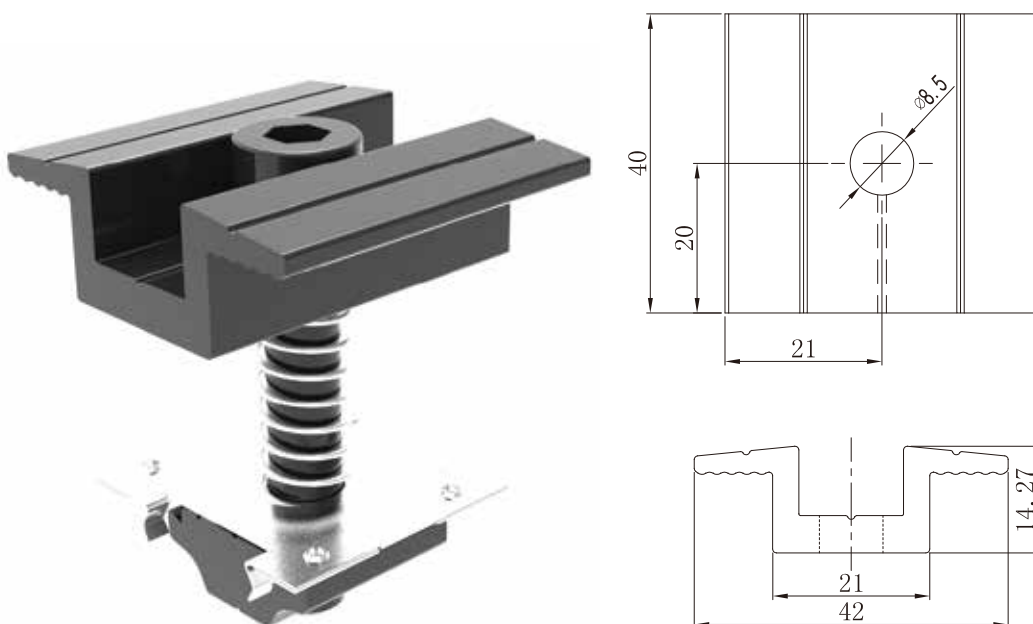
| | |
|-----------------------|--|
| Product Name | Black 30/35mm Mid Clamp |
| Product Code | GM-MC-30(35)-AZ-4-B |
| Application | Adjustable for framed PV module of 30-35mm thickness (with Goomax Rails) |
| Dimensions | L 40xW 37xH 14mm |
| Weight | 0.052kg |
| Material | AL6005-T5 |
| Surface Finish | Black electrophoresis |
| Packaging | 300pcs/carton, 500x300x210mm |
| Standard | AS/NZS 1170.2 |



| Component List (Qty./Set) | | | |
|---------------------------|---|---------------------|---|
| Mid clamp | 1 | Hexagon Bolt(M8*45) | 1 |
| SUS304 Washer | 1 | Spring | 1 |
| T Nut | 1 | Earthing clip | 1 |

Adjustable Mid Clamp

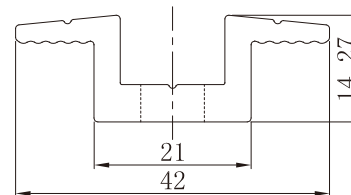
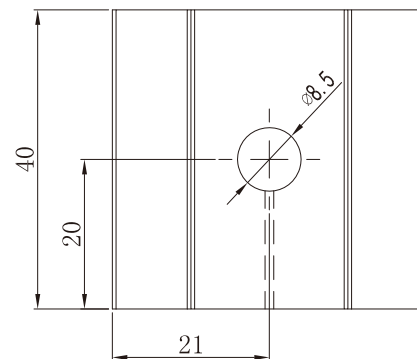
| | |
|-----------------------|--|
| Product Name | Black 30/35mm Mid Clamp with earthing plate |
| Product Code | GM-MC-30(35)-AZ-2-B |
| Application | Adjustable for framed PV module of 30-35mm thickness (with Goomax Rails) |
| Dimensions | L 42xW 40xH 14.3mm |
| Weight | 0.052kg |
| Material | AL6005-T5 |
| Surface Finish | Black electrophoresis |
| Packaging | 300pcs/carton, 500x300x210mm |
| Standard | AS/NZS 1170.2 |



| Component List (Qty./Set) | | | |
|---------------------------|---|---------------------|---|
| Mid clamp | 1 | Hexagon Bolt(M8*45) | 1 |
| SUS304 Washer | 1 | Spring | 1 |
| T Nut | 1 | Earthing clip | 1 |

Adjustable Mid Clamp

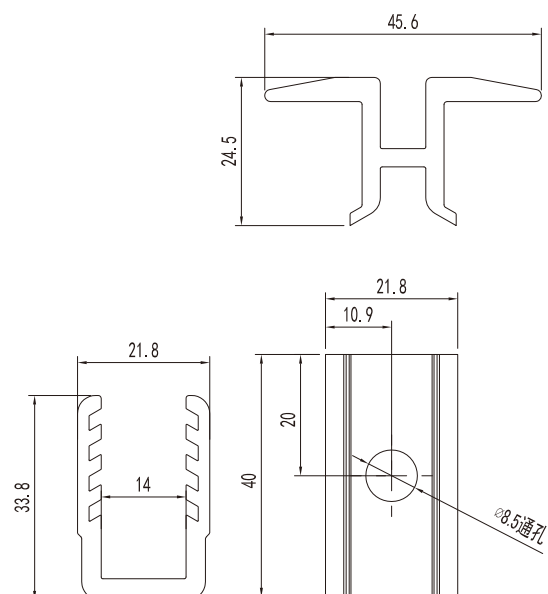
| | |
|-----------------------|--|
| Product Name | 30/35mm Mid Clamp with earthing clip |
| Product Code | GM-MC-30(35) |
| Application | Adjustable for framed PV module of 30-35mm thickness (with Goomax Rails) |
| Dimensions | L 42xW 40xH 14.3mm |
| Weight | 0.052kg |
| Material | AL6005-T5 |
| Surface Finish | Anodized (10 micron) |
| Packaging | 300pcs/carton, 500x300x210mm |
| Standard | AS/NZS 1170.2 |



| Component List (Qty./Set) | | | |
|---------------------------|---|---------------------|---|
| Mid clamp | 1 | Hexagon Bolt(M8*45) | 1 |
| SUS304 Washer | 1 | Spring | 1 |
| T Nut | 1 | Earthing clip | 1 |

Adjustable Mid Clamp

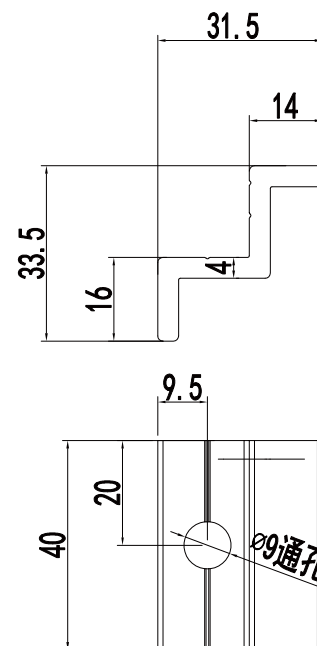
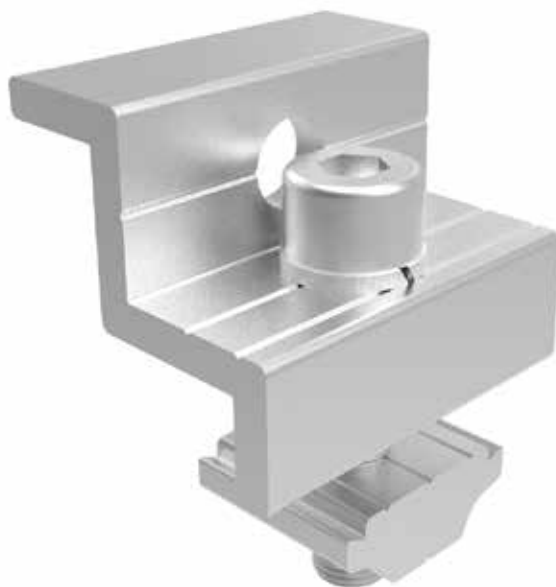
| | |
|-----------------------|--|
| Product Name | 35-50mm Adjustable Mid Clamp |
| Product Code | GM-MC-35/50-D |
| Application | Adjustable for framed PV module of 35-50mm thickness (with Goomax Rails) |
| Dimensions | L45.6XW52.9XH40 |
| Weight | 0.0761KG |
| Material | AL6005-T5 |
| Surface Finish | Anodized (10 micron) |
| Packaging | 300pcs/carton, 500x300x210mm |
| Standard | AS/NZS 1170.2 |



| Component List (Qty./Set) | | | |
|---------------------------|---|---------------------|---|
| Adjustable Mid clamp A | 1 | T Nut | 1 |
| Adjustable Mid clamp B | 1 | Hexagon Bolt(M8*20) | 1 |
| SUS304 Washer | 1 | | |

Adjustable End Clamp

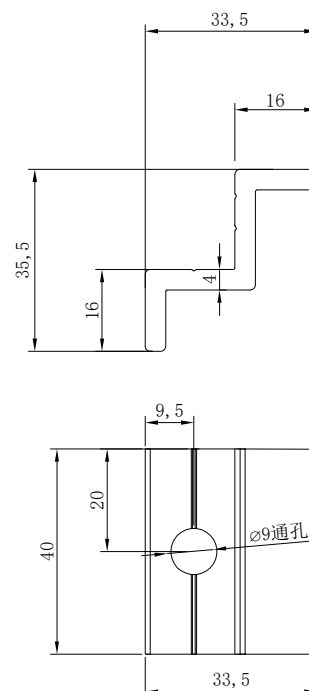
| | |
|-----------------------|---|
| Product Name | 28/30mm End Clamp |
| Product Code | GM-EC-28(30)-AZ |
| Application | Adjustable for framed PV module of 28mm and 30 mm thickness (with Goomax Rails) |
| Dimensions | L 33.5xW 40xH 31.5mm |
| Weight | 0.053kg |
| Material | AL6005-T5 |
| Surface Finish | Anodized (10 micron) |
| Packaging | 300pcs/carton, 500x300x210mm |
| Standard | AS/NZS 1170.2 |



| Component List (Qty./Set) | | | |
|---------------------------|---|---------------------|---|
| Mid clamp | 1 | T Nut | 1 |
| SUS304 Washer | 1 | Hexagon Bolt(M8*35) | 1 |

Adjustable End Clamp

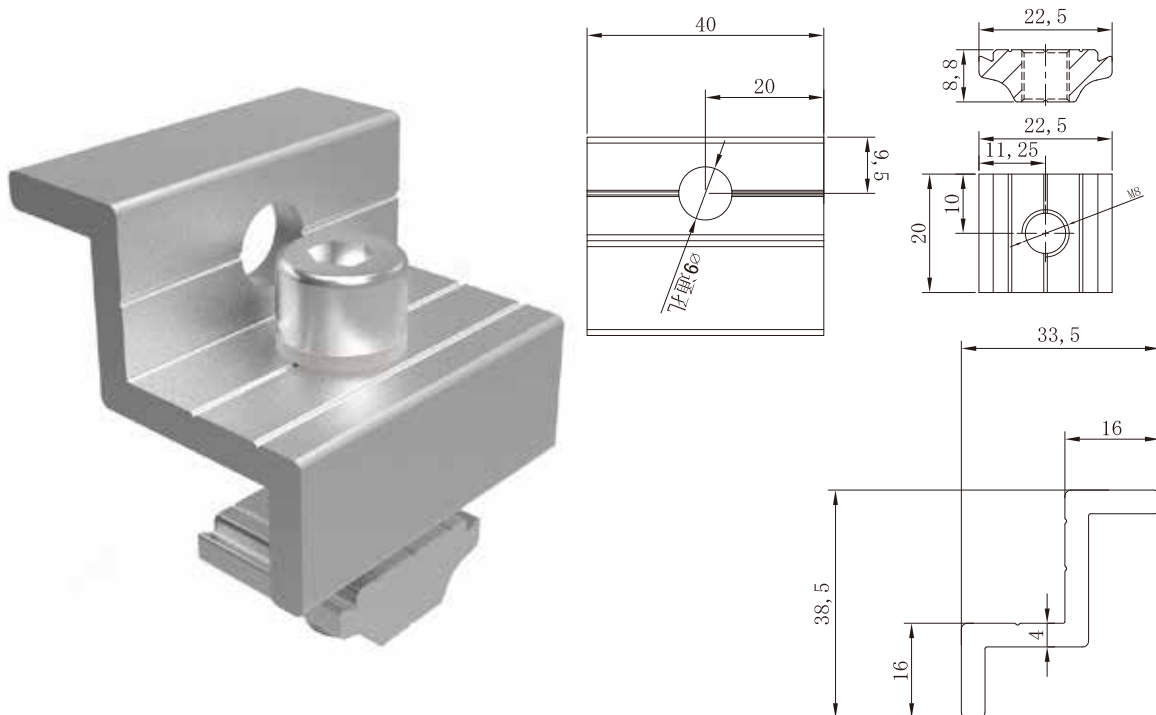
| | |
|-----------------------|---|
| Product Name | 30/32mm End Clamp |
| Product Code | GM-EC-30(32)-AZ |
| Application | Adjustable for framed PV module of 30mm and 32 mm thickness (with Goomax Rails) |
| Dimensions | L 33.5xW 40xH 35.5mm |
| Weight | 0.055kg |
| Material | AL6005-T5 |
| Surface Finish | Anodized (10 micron) |
| Packaging | 300pcs/carton, 500x300x210mm |
| Standard | AS/NZS 1170.2 |



| Component List (Qty./Set) | | | |
|---------------------------|---|---------------------|---|
| Mid clamp | 1 | T Nut | 1 |
| SUS304 Washer | 1 | Hexagon Bolt(M8*35) | 1 |

Adjustable End Clamp

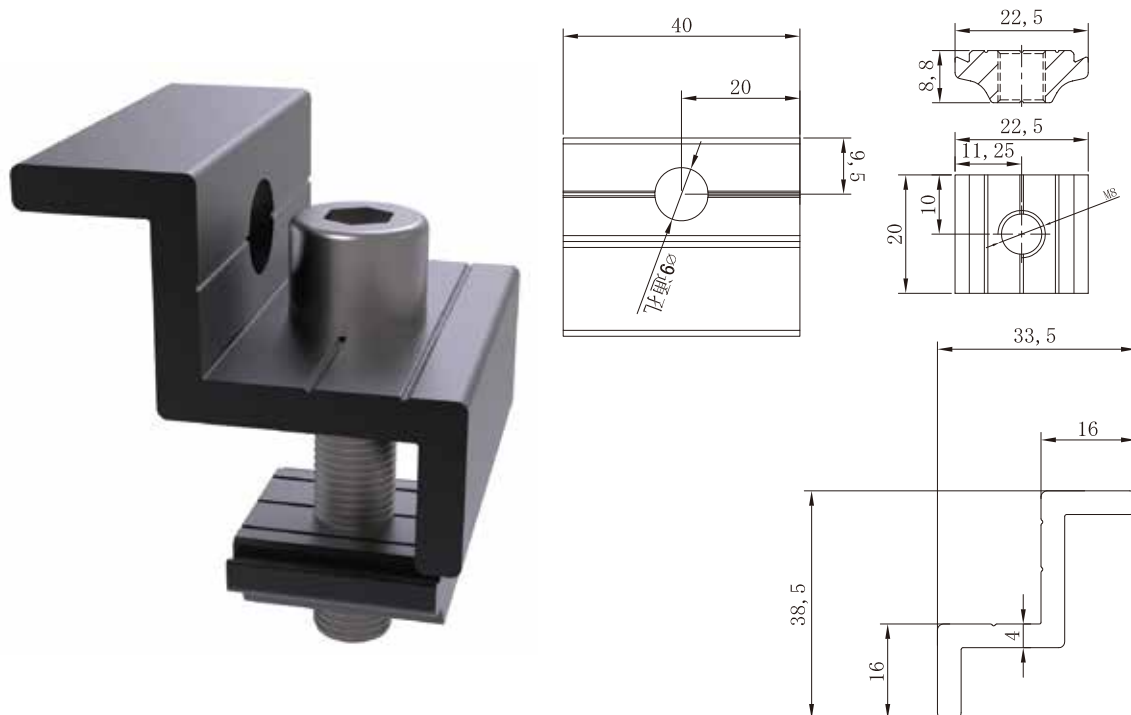
| | |
|-----------------------|---|
| Product Name | 30/35mm End Clamp |
| Product Code | GM-EC-30(35)-AZ |
| Application | Adjustable for framed PV module of 30mm and 35 mm thickness (with Goomax Rails) |
| Dimensions | L 22.5xW 20xH 38.5mm |
| Weight | 0.055kg |
| Material | AL6005-T5 |
| Surface Finish | Anodized (10 micron) |
| Packaging | 300pcs/carton, 500x300x210mm |
| Standard | AS/NZS 1170.2 |



| Component List (Qty./Set) | | | |
|---------------------------|---|---------------------|---|
| End clamp | 1 | T Nut | 1 |
| SUS304 Washer | 1 | Hexagon Bolt(M8*35) | 1 |

Adjustable End Clamp

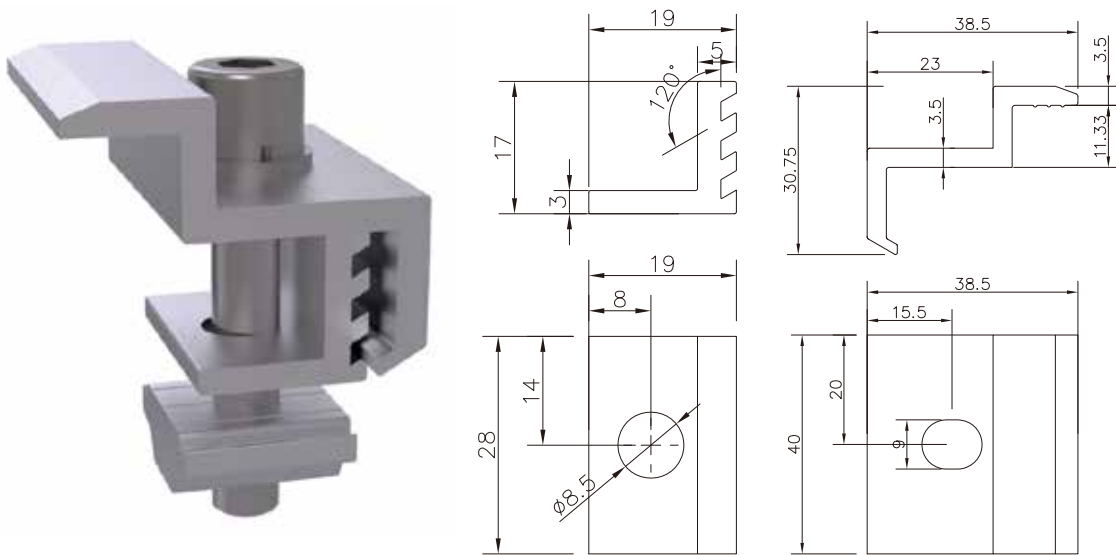
| | |
|-----------------------|---|
| Product Name | Black 30/35mm End Clamp |
| Product Code | GM-EC-30(35)-AZ-B |
| Application | Adjustable for framed PV module of 30mm and 35 mm thickness (with Goomax Rails) |
| Dimensions | L 22.5xW 20xH 38.5mm |
| Weight | 0.055kg |
| Material | AL6005-T5 |
| Surface Finish | Black electrophoresis |
| Packaging | 300pcs/carton, 500x300x210mm |
| Standard | AS/NZS 1170.2 |



| Component List (Qty./Set) | | | |
|---------------------------|---|---------------------|---|
| End clamp | 1 | T Nut | 1 |
| SUS304 Washer | 1 | Hexagon Bolt(M8*35) | 1 |

Adjustable End Clamp

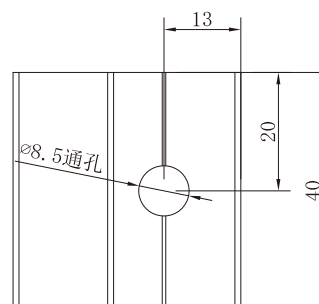
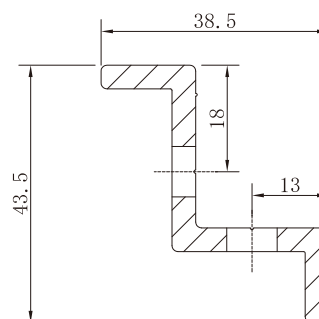
| | |
|-----------------------|---|
| Product Name | 30/40mm End Clamp |
| Product Code | GM-EC-30(40)-AZ |
| Application | Adjustable for framed PV module of 30mm and 40 mm thickness (with Goomax Rails) |
| Dimensions | L 30.8xW 38.5xH 40mm |
| Weight | 0.058kg |
| Material | AL6005-T5 |
| Surface Finish | Anodized (10 micron) |
| Packaging | 300pcs/carton, 500x300x210mm |
| Standard | AS/NZS 1170.2 |



| Component List (Qty./Set) | | | |
|---------------------------|---|---------------------|---|
| End clamp | 1 | T Nut | 1 |
| Base | 1 | Hexagon Bolt(M8*45) | 1 |
| SUS304 Washer | 1 | | |

Adjustable End Clamp

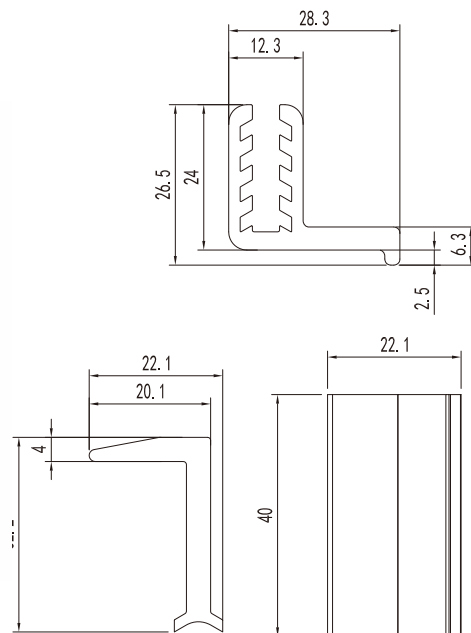
| | |
|-----------------------|---|
| Product Name | 35/40mm End Clamp |
| Product Code | GM-EC-35(40)-AZ |
| Application | Adjustable for framed PV module of 35mm and 40 mm thickness (with Goomax Rails) |
| Dimensions | L 22.5xW 20xH 43.5mm |
| Weight | 0.057kg |
| Material | AL6005-T5 |
| Surface Finish | Anodized (10 micron) |
| Packaging | 300pcs/carton, 500x300x210mm |
| Standard | AS/NZS 1170.2 |



| Component List (Qty./Set) | | | |
|---------------------------|---|---------------------|---|
| End clamp | 1 | T Nut | 1 |
| SUS304 Washer | 1 | Hexagon Bolt(M8*35) | 1 |

Adjustable End Clamp

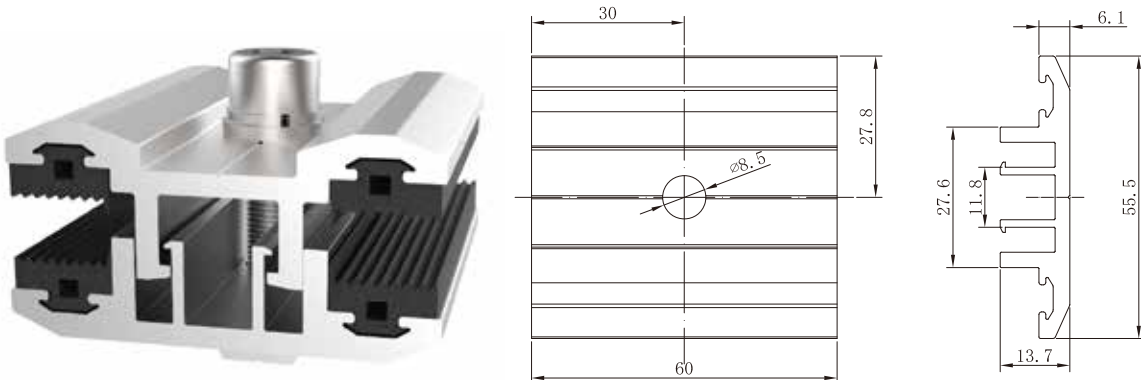
| | |
|-----------------------|--|
| Product Name | 35-50mm Adjustable End Clamp |
| Product Code | GM-EC-35/50-D |
| Application | Adjustable for framed PV module of 35mm to 50 mm thickness (with Goomax Rails) |
| Dimensions | L40*W34.5*H60 |
| Weight | 0.064KG |
| Material | AL6005-T5 |
| Surface Finish | Anodized (10 micron) |
| Packaging | 300pcs/carton, 500x300x210mm |
| Standard | AS/NZS 1170.2 |



| Component List (Qty./Set) | | | |
|---------------------------|---|---------------------|---|
| Adjustable End clamp A | 1 | T Nut | 1 |
| Adjustable End clamp B | 1 | Hexagon Bolt(M8*20) | 1 |
| SUS304 Washer | 1 | | |

Thin Film Mid Clamp

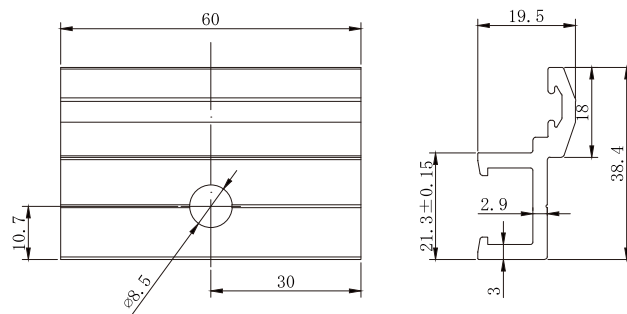
| | |
|-----------------------|---|
| Product Name | Thin Film Mid Clamp |
| Product Code | GM-MC-60-TF2-AZ |
| Application | For thin film PV module of 5-8mm thickness (with Goomax Rails) |
| Dimensions | L 60xW 55.5xH 19.5mm |
| Weight | 0.047KG |
| Material | AL6005-T5 |
| Surface Finish | Anodized (10 micron) |
| Packaging | 300pcs/carton, 500x300x210mm |
| Standard | AS/NZS 1170.2 |



| Component List (Qty./Set) | | | |
|---------------------------|---|---------------------|---|
| Thin Film Mid Clamp A | 1 | T Nut | 1 |
| Thin Film Mid Clamp B | 1 | Hexagon Bolt(M8*35) | 1 |
| SUS304 Washer | 1 | Rubber Washer | 4 |

Thin Film End Clamp

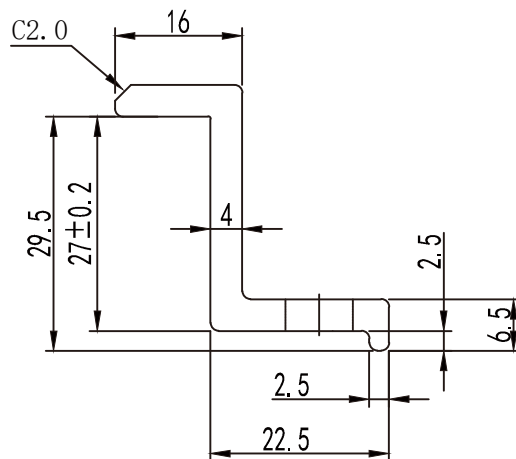
| | |
|-----------------------|---|
| Product Name | Thin Film End Clamp |
| Product Code | GM-EC-60-TF2-AZ |
| Application | For thin film PV module of 5-8mm thickness (with Goomax Rails) |
| Dimensions | L 60xW 41.5xH 16.8mm |
| Weight | 0.047 |
| Material | AL6005-T5 |
| Surface Finish | Anodized (10 micron) |
| Packaging | 300pcs/carton, 500x300x210mm |
| Standard | AS/NZS 1170.2 |



| Component List (Qty./Set) | | | |
|---------------------------|---|---------------------|---|
| Thin FilmEnd Clamp A | 1 | T Nut | 1 |
| Thin Film End Clamp B | 1 | Hexagon Bolt(M8*35) | 1 |
| SUS304 Washer | 1 | Rubber Washer | 2 |

End Clamp

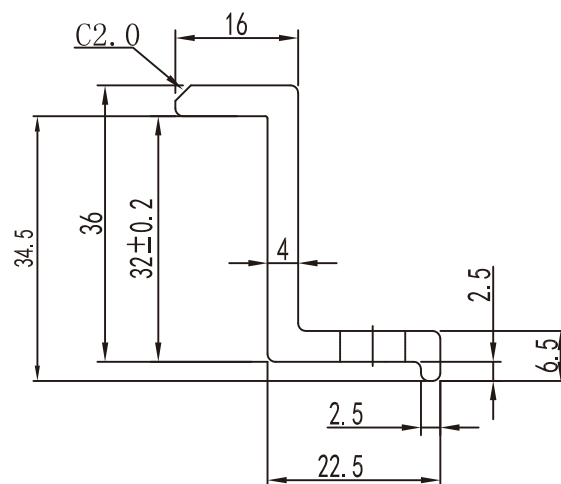
| | |
|-----------------------|---|
| Product Name | 30mm End Clamp |
| Product Code | GM-EC-30-AZ |
| Application | For framed PV module of 30mm thickness (with Goomax Rails) |
| Dimensions | L 22.5xW 20xH 29.5mm |
| Weight | 0.05kg |
| Material | AL6005-T5 |
| Surface Finish | Anodized (10 micron) |
| Packaging | 300pcs/carton, 500x300x210mm |
| Standard | AS/NZS 1170.2 |



| Component List (Qty./Set) | | | |
|---------------------------|---|---------------------|---|
| End clamp | 1 | T Nut | 1 |
| SUS304 Washert | 1 | Hexagon Bolt(M8*25) | 1 |

End Clamp

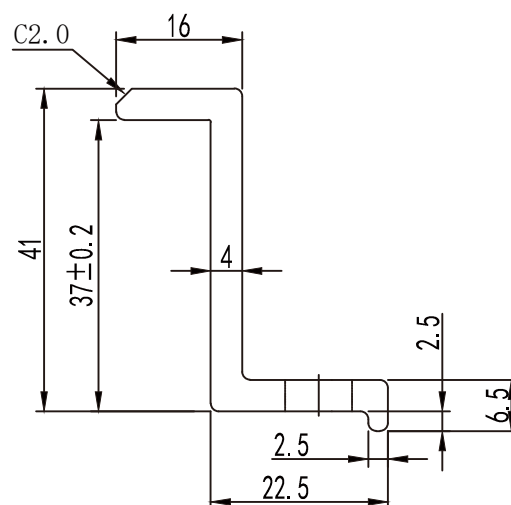
| | |
|-----------------------|---|
| Product Name | 35mm End Clamp |
| Product Code | GM-EC-35-AZ |
| Application | For framed PV module of 35mm thickness (with Goomax Rails) |
| Dimensions | L 22.5xW 20xH 34.5mm |
| Weight | 0.052kg |
| Material | AL6005-T5 |
| Surface Finish | Anodized (10 micron) |
| Packaging | 300pcs/carton, 500x300x210mm |
| Standard | AS/NZS 1170.2 |



| Component List (Qty./Set) | | | |
|---------------------------|---|---------------------|---|
| End clamp | 1 | T Nut | 1 |
| SUS304 Washer | 1 | Hexagon Bolt(M8*25) | 1 |

End Clamp

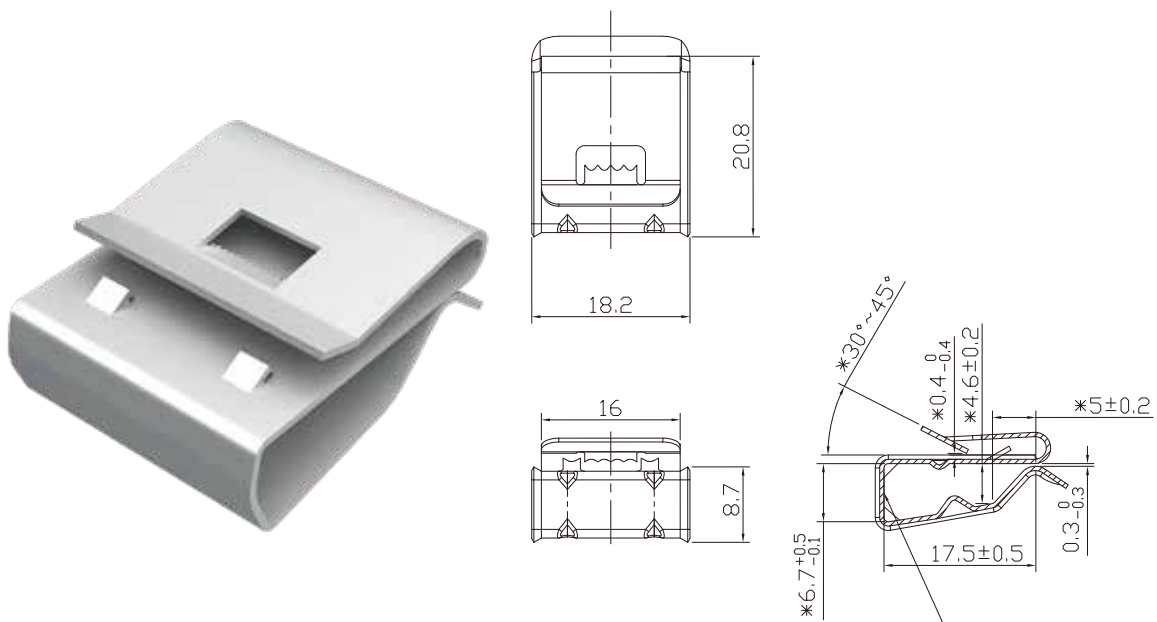
| | |
|-----------------------|---|
| Product Name | 40mm End Clamp |
| Product Code | GM-EC-40-AZ |
| Application | For framed PV module of 40mm thickness (with Goomax Rails) |
| Dimensions | L 22.5xW 20xH 41mm |
| Weight | 0.054kg |
| Material | AL6005-T5 |
| Surface Finish | Anodized (10 micron) |
| Packaging | 300pcs/carton, 500x300x210mm |
| Standard | AS/NZS 1170.2 |



| Component List (Qty./Set) | | | |
|---------------------------|---|---------------------|---|
| End clamp | 1 | T Nut | 1 |
| SUS304 Washer | 1 | Hexagon Bolt(M8*25) | 1 |

Cable Clip

| | |
|----------------------------------|--|
| Product Name | Goomax 2-Cable Cable Clip |
| Product Code | GM-XJ-AZ |
| Application | Silver Cable Clip for 2 Cables for Framed PV Module only |
| PV Module Frame Thickness | 1.3-2.0mm |
| Max Cable Size | 10mm ² |
| Dimensions | L 20.8 xW 18.2mm |
| Weight | 0.0042kg/pc |
| Material | SUS304 |
| Packaging | 100pcs/bag, 5000pcs/carton, 500x300x210mm |
| Standard | AS/NZS 1170.2 |

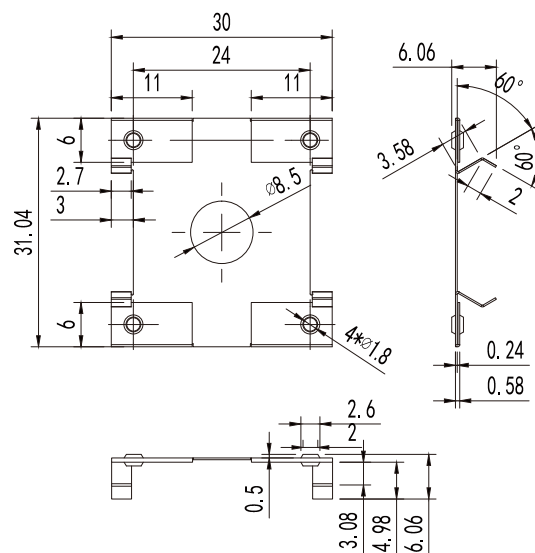
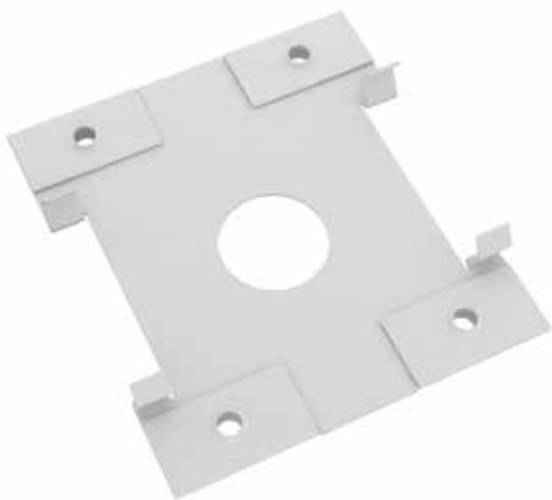


Component List (Qty./Set)

| | |
|------------|---|
| Cable Clip | 1 |
|------------|---|

Earthing Clip

| | |
|---------------------|---|
| Product Name | Goomax Earthing Washer |
| Product Code | GM-E-EL-12 |
| Application | Earthing Washers for Preassembled Kits |
| Dimensions | L 30 xW 31.04mm |
| Weight | 0.002 kg/pc |
| Material | SUS304 |
| Packaging | 100pcs/bag, 5000pcs/carton, 500x300x210mm |
| Standard | AS/NZS 1170.2 |

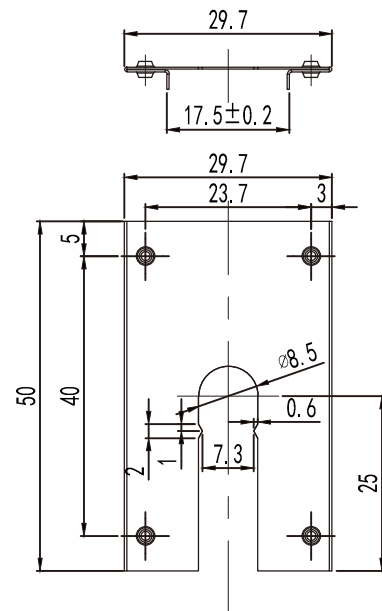
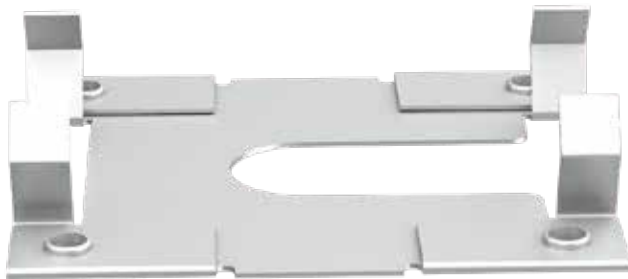


Component List (Qty./Set)

| | |
|-----------------|---|
| Earthing Washer | 1 |
|-----------------|---|

Earthing Clip

| | |
|---------------------|---|
| Product Name | Goomax Earthing Washer |
| Product Code | GM-E-EL-04 |
| Application | Earthing Washer for End Clamp |
| Dimensions | L 50 xW 29.7mm |
| Weight | 3g/pc |
| Material | SUS304 |
| Packaging | 100pcs/bag, 5000pcs/carton, 500x300x210mm |
| Standard | AS/NZS 1170.2 |



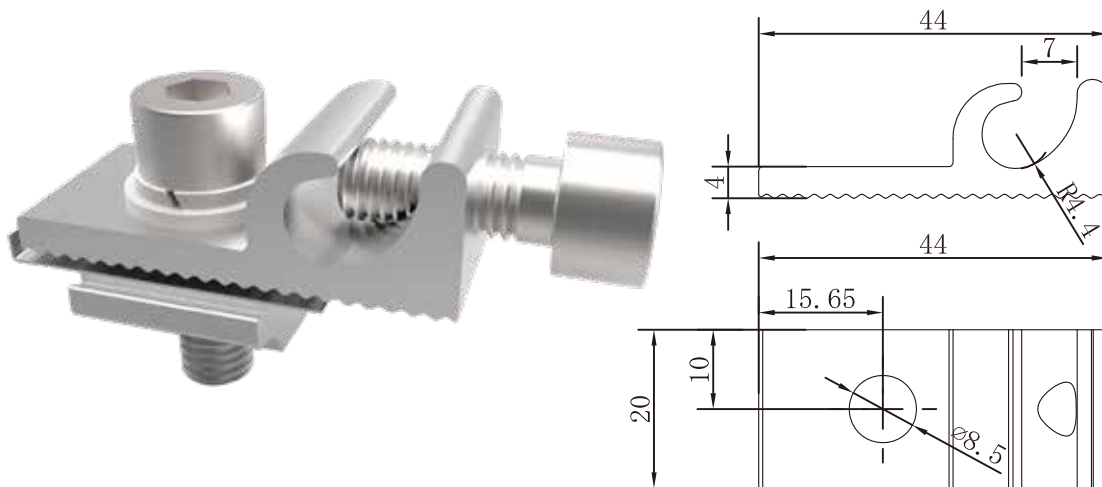
Component List (Qty./Set)

Earthing Washer

1

Grounding Lug

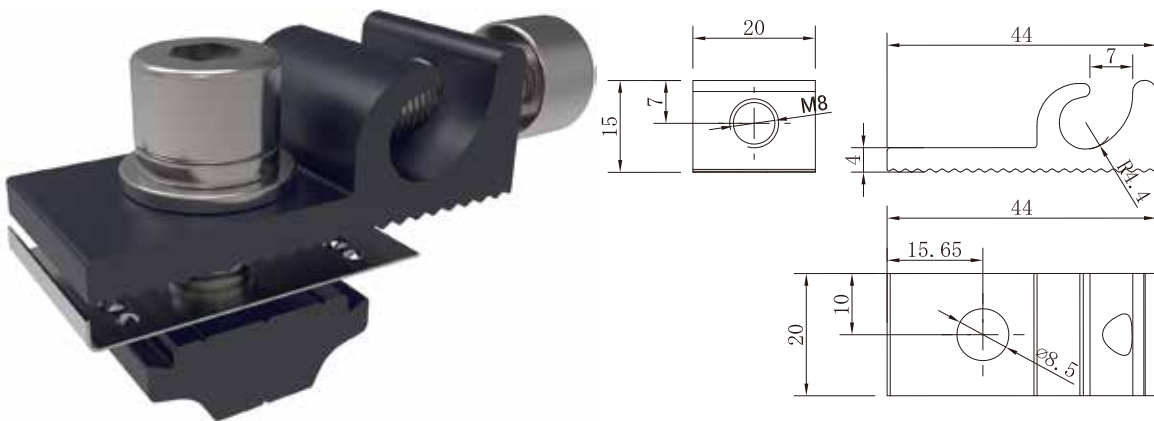
| | |
|-----------------------|--|
| Product Name | Goomax Grounding Lug |
| Product Code | GM-EK-AZ |
| Application | Grounding Lug for Goomax's PV Mounting Systems |
| Max Cable Size | 35mm ² |
| Dimensions | L 44xH 15mm |
| Weight | 0.0496kg/pc |
| Material | AL6005-T5, Bolts: SUS304 |
| Surface Finish | Anodized (10 micron) |
| Packaging | 400pcs/carton, 500x300x210mm |
| Standard | AS/NZS 1170.2 |



| Component List (Qty./Set) | | | |
|---------------------------|---|-----------------|---|
| Grounding Lug | 1 | T Nut | 1 |
| SUS304 Bolts and Washers | 2 | Earthing Washer | 1 |

Grounding Lug

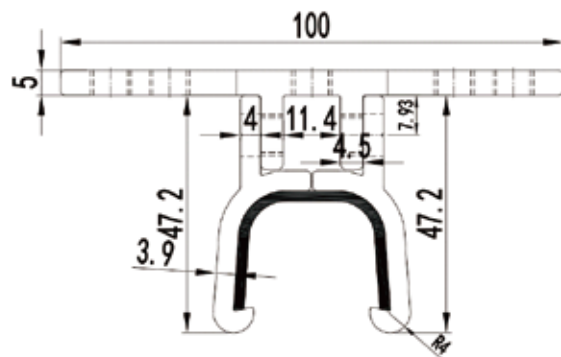
| | |
|-----------------------|--|
| Product Name | Black Grounding Lug |
| Product Code | GM-EK-AZ-B |
| Application | Grounding Lug for Goomax's PV Mounting Systems |
| Max Cable Size | 35mm ² |
| Dimensions | L 44xH 15mm |
| Weight | 0.16kg/pc |
| Material | AL6005-T5, Bolts: SUS304 |
| Surface Finish | Black electrophoresis |
| Packaging | 400pcs/carton, 500x300x210mm |
| Standard | AS/NZS 1170.2 |



| Component List (Qty./Set) | | | |
|---------------------------|---|-----------------|---|
| Grounding Lug | 1 | T Nut | 1 |
| SUS304 Bolts and Washers | 2 | Earthing Washer | 1 |

Metal Roof Brackets

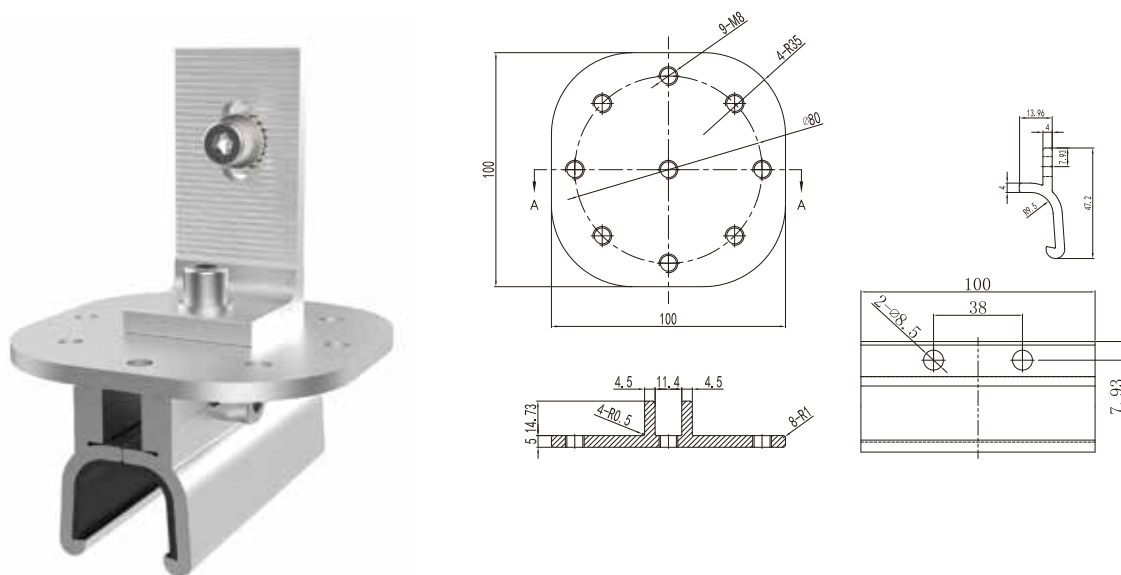
| | |
|---|---|
| Product Name | Goomax Kliplik 700 Interface |
| Product Code | GM-MRH-07-AZ |
| Application | Non-penetrative Installation on Lysaght Kliplik 700 Roofsheets/Fielders Kingclip 700 Roofsheets |
| Dimensions | L 100xH52.2mm |
| Weight | 0.35kg/pc |
| Material | AL6005-T5, Bolts: SUS304, Rubber Pad: EPDM |
| Surface Finish | Anodized (10 micron) |
| Packaging | 60pcs/carton, 500x300x210mm |
| Packaging with L Feet Preassembled | 30pcs/carton, 500x300x210mm |
| Standard | AS/NZS 1170.2 |



| Component List (Qty./Set) | | | |
|---------------------------|---|--------------------------|---|
| Bracket Parts | 3 | SUS304 Bolts and Washers | 6 |
| EPDM Rubber Pad | 1 | | |

Metal Roof Brackets

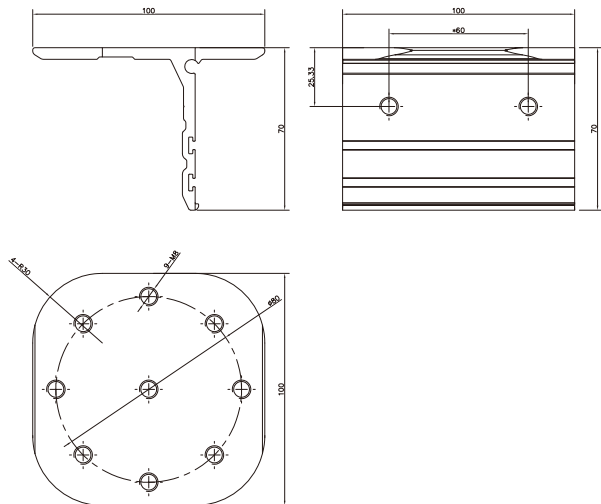
| | |
|-----------------------|---|
| Product Name | Goomax Kliplok 700 Interface with L feet |
| Product Code | GM-MRH-07L-AZ |
| Application | Non-penetrative Installation on Lysaght Kliplok 700 Roofsheets/Fielders Kingklip 700 Roofsheets |
| Dimensions | L 100xH132.2mm |
| Weight | 0.45kg/pc |
| Material | AL6005-T5, Bolts: SUS304, Rubber Pad: EPDM |
| Surface Finish | Anodized (10 micron) |
| Packaging | 30pcs/carton, 500x300x210mm |
| Standard | AS/NZS 1170.2 |



| Component List (Qty./Set) | | | |
|---------------------------|---|--------------------------|---|
| Bracket Parts | 3 | SUS304 Washer Set | 2 |
| EPDM Rubber Pad | 1 | T Nut | 1 |
| SUS304 Bolts and Washers | 6 | Hexagon Bolt Set (M8*25) | 1 |
| L Feet | 1 | | |

Metal Roof Brackets

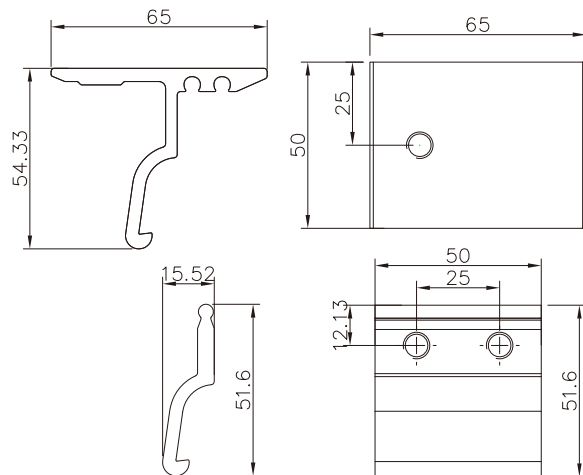
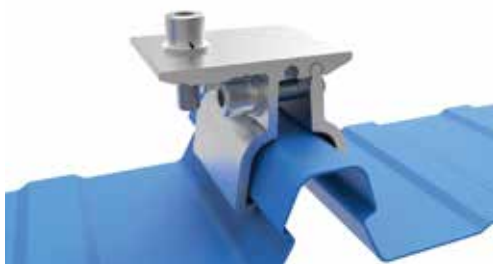
| | |
|---|--|
| Product Name | Goomax Kliplik 305 Interface |
| Product Code | GM-MRH-18-AZ |
| Application | Non-penetrative Installation on Lysaght Longline 305 |
| Dimensions | L 100xH 70mm |
| Weight | 0.38kg/pc |
| Material | AL6005-T5, Bolts: SUS304, Rubber Pad: EPDM |
| Surface Finish | Anodized (10 micron) |
| Packaging | 60pcs/carton, 500x300x210mm |
| Packaging with L Feet Preassembled | 30pcs/carton, 500x300x210mm |
| Standard | AS/NZS 1170.2 |



| Component List (Qty./Set) | | | |
|---------------------------|---|--------------------------|---|
| Bracket Parts | 2 | SUS304 Bolts and Washers | 4 |
| EPDM Rubber Pad | 1 | | |

Metal Roof Brackets

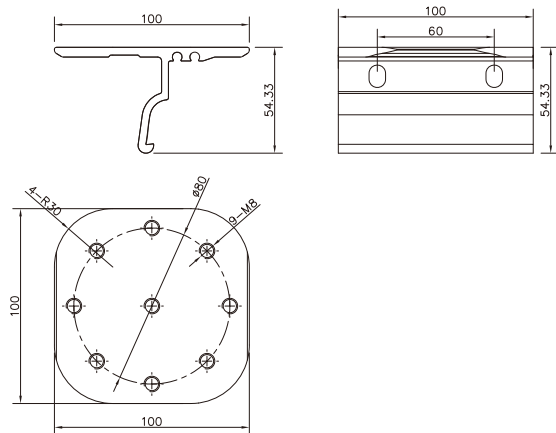
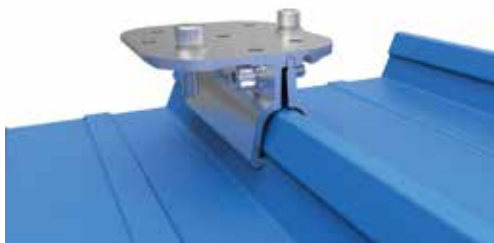
| | |
|-----------------------|---|
| Product Name | Goomax Universal Kliplok 406&700 Interface -Small |
| Product Code | GM-MRH-19-AZ |
| Application | Non-penetrative Installation on Lysaght 406,Lysaght 700 |
| Dimensions | L 65xH 54.33mm |
| Weight | 0.17kg/pc |
| Material | AL6005-T5, Bolts: SUS304, Rubber Pad: EPDM |
| Surface Finish | Anodized (10 micron) |
| Packaging | 120pcs/carton, 500x300x210mm |
| Standard | AS/NZS 1170.2 |



| Component List (Qty./Set) | | | |
|---------------------------|---|--------------------------|---|
| Bracket Parts | 2 | SUS304 Bolts and Washers | 3 |
| EPDM Rubber Pad | 2 | | |

Metal Roof Brackets

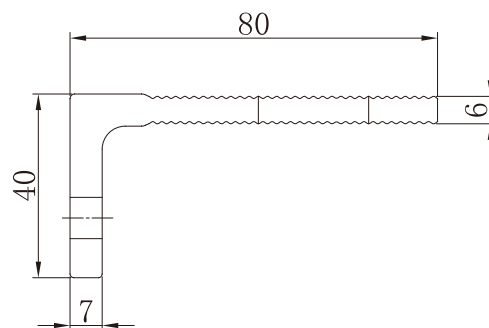
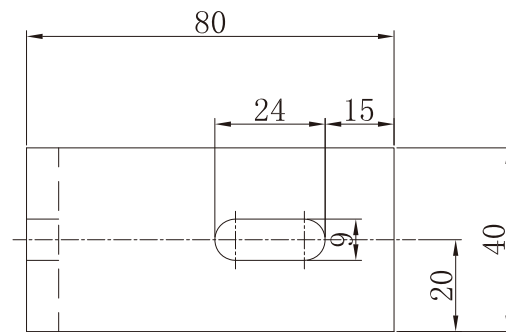
| | |
|-----------------------|--|
| Product Name | Goomax Universal Kliplok 406&700 Interface -Big |
| Product Code | GM-MRH-20-AZ |
| Application | Non-penetrative Installation on Lysaght 406, Lysaght 700 |
| Dimensions | L 100xH 54.33mm |
| Weight | 0.34kg/pc |
| Material | AL6005-T5, Bolts: SUS304, Rubber Pad: EPDM |
| Surface Finish | Anodized (10 micron) |
| Packaging | 60pcs/carton, 500x300x210mm |
| Standard | AS/NZS 1170.2 |



| Component List (Qty./Set) | | | |
|---------------------------|---|--------------------------|---|
| Bracket Parts | 2 | SUS304 Bolts and Washers | 3 |
| EPDM Rubber Pad | 2 | | |

Trapezoidal Roof Clamp

| | |
|-----------------------|--|
| Product Name | Goomax Trapezoidal Roof Clamp |
| Product Code | GM-MRH-T4-AZ |
| Application | Penetrative Installation on Trapezoidal Roof |
| Dimensions | L 57.14xH 114.81mm |
| Weight | 0.19kg/pc |
| Material | AL6005-T5, Bolts: SUS304, Rubber Pad: EPDM |
| Surface Finish | Anodized (10 micron) |
| Packaging | 40pcs/carton, 500x300x210mm |
| Standard | AS/NZS 1170.2 |



| Component List (Qty./Set) | | | |
|---------------------------|---|--------------------------|---|
| L Feet with T Nut Set | 1 | SUS304 Bolts and Washers | 2 |
| Bracket | 1 | ST5.5*19 Screws (SUS304) | 4 |
| EPDM Rubber Pad | 2 | | |

厦门金固美能源科技有限公司

Xiamen Goomax Energy Technology Co.,Ltd

运营中心：厦门市 集美区 电子城国际创新中心1号楼17层

Office: 17/F, Building 1, Electronics City International Innovation Center, Jimei District, Xiamen, China

Factory Add:Goomax Industrial Park, Dongtian Town, Nan'an City, Fujian, China

Tel: +86-592-2938661 Fax: +86-592-2938662 Email: info@goomaxsolar.com

Web: www.goomaxsolar.com

福建固美金属股份有限公司

福建省南安市东田镇

Add: DongTian, Nan'an, Quanzhou, Fujian

Tel: +86-0595-2652 8996 Fax: +86-0595-2652 8903

不锈钢公司 Goomax Stainless Steel Products Co., Ltd

福建省南安市溪美街道南同公路莲塘路段

Add: Nantong Road, Ximei Town, Nan'an, Quanzhou, Fujian

Tel: +86-0595-8699 9988 Fax: +86-0595-2699 9989

广东固美 Guangdong Goomax

佛山市南海区狮山镇

Add: Shishan Town, Nanhai District, Foshan City,

Guangdong Province, China

Tel: +86-0757-6686 6006 Fax: +86-0592-2938662

西班牙公司 Spain Goomax

Add: Ubicació n: Passeig de Guayaquil, 17,

Barcelona CP.08030, España

Tel : 34-9376 39581

菲律宾公司 Philippine Goomax

Add: Binondo District, Manila City, Philippine

Tel: 0063-2-2421115 Fax: 0063-2-242 1116

新加坡公司 Singapore Goomax

Add: 7030 Ang kio ave #06-53, Singapore

Tel: 0065-6858 6266 Fax: 0065-6858 6366

缅甸公司 Myanmar Goomax

Add: No.51/B/1, East horse Race Course Road,

Tamwe Township, Yangon, Myanmar

Tel: 959- 4320 1666



Wechat



Web